

## Integrin beta 1 / CD29 antibody [HL1255]

**Cat. No. GTX636657**

<b>Host</b>	Rabbit
<b>Clonality</b>	Monoclonal
<b>Isotype</b>	IgG
<b>Applications</b>	WB, ICC/IF, IHC-P, IP
<b>Reactivity</b>	Human, Mouse, Rat, Cat, Dog

References ( 1 )

Package

100 µl, 25 µl

## PRODUCT

## Summary

Integrin beta-1 / CD29 antibody detects integrin beta-1 protein (ITGB1), also known as CD29, which forms heterodimeric receptors with at least ten integrin alpha proteins to mediate various aspects of cell adhesion and migration. These functions are essential for embryogenesis, tissue repair, immune function, and other crucial processes in multicellular organisms. Integrin beta-1 has a predicted molecular weight of 88 kDa and exists in multiple isoforms.

## Applications

## Application Note

\*Optimal dilutions/concentrations should be determined by the researcher.

Suggested dilution	Recommended dilution
WB	1:5000-1:20000
ICC/IF	Assay dependent
IHC-P	1:100-1:1000
IP	Assay dependent

Not tested in other applications.

**Observed MW (kDa)** 115-135 kDa.

**Product Note** This antibody was raised against human Integrin beta 1 / CD29 Intracellular domain.

## Properties

<b>Form</b>	Liquid
<b>Buffer</b>	PBS
<b>Preservative</b>	No preservatives
<b>Storage</b>	Store as concentrated solution. Centrifuge briefly prior to opening vial. For short-term storage (1-2 weeks), store at 4°C. For long-term storage, aliquot and store at -20°C or below. Avoid multiple freeze-thaw cycles.
<b>Concentration</b>	1 mg/ml (Please refer to the vial label for the specific concentration.)
<b>Immunogen</b>	Synthetic peptide encompassing a sequence within the Intracellular domain of human Integrin beta 1 / CD29. The exact sequence is proprietary.



For full product information, images and publications, please visit our [website](#).

Date 2026 / 04 / 05 Page 1 of 2

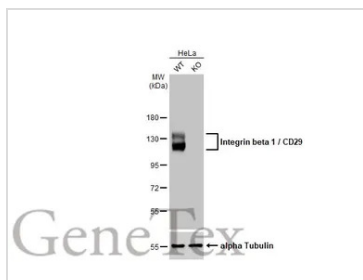
**Purification** Affinity purified by Protein A.

**Conjugation** Unconjugated

For laboratory research use only. Not for any clinical, therapeutic, or diagnostic use in humans or animals. Not for animal or human consumption.

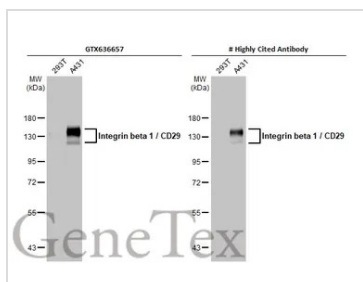
**Note** Purchasers shall not, and agree not to enable third parties to, analyze, copy, reverse engineer or otherwise attempt to determine the structure or sequence of the product.

DATA IMAGES



**GTX636657 WB Image**

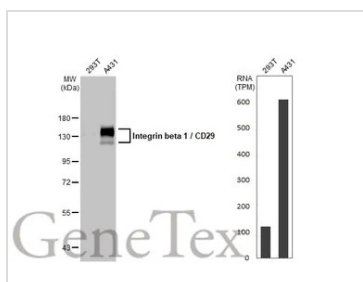
Wild-type (WT) and ITGB1 knockout (KO) HeLa cell extracts (30 µg) were separated by 7.5% SDS-PAGE, and the membrane was blotted with Integrin beta 1 / CD29 antibody [HL1255] (GTX636657) diluted at 1:20000. The HRP-conjugated anti-rabbit IgG antibody (GTX213110-01) was used to detect the primary antibody.



**GTX636657 WB Image**

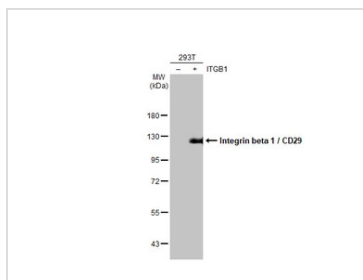
Various whole cell extracts (30 µg) were separated by 7.5% SDS-PAGE, and the membranes were blotted with Integrin beta 1 / CD29 antibody [HL1255] (GTX636657) diluted at 1:10000 and competitor's antibody (# Highly Cited Antibody) diluted at 1:10000. The HRP-conjugated anti-rabbit IgG antibody (GTX213110-01) was used to detect the primary antibody.

\*The competitor is not affiliated with GeneTex and does not endorse this product.



**GTX636657 WB Image**

Various whole cell extracts (30 µg) were separated by 7.5% SDS-PAGE, and the membrane was blotted with Integrin beta 1 / CD29 antibody [HL1255] (GTX636657) diluted at 1:10000. The HRP-conjugated anti-rabbit IgG antibody (GTX213110-01) was used to detect the primary antibody. Corresponding RNA expression data for the same cell lines are based on Human Protein Atlas program.



**GTX636657 WB Image**

Non-transfected (-) and transfected (+) 293T whole cell extracts (100 µg) were separated by 7.5% SDS-PAGE, and the membrane was blotted with Integrin beta 1 / CD29 antibody [HL1255] (GTX636657) diluted at 1:50000. The HRP-conjugated anti-rabbit IgG antibody (GTX213110-01) was used to detect the primary antibody, and the signal was developed with Trident ECL plus-Enhanced.



For full product information, images and publications, please visit our [website](#).