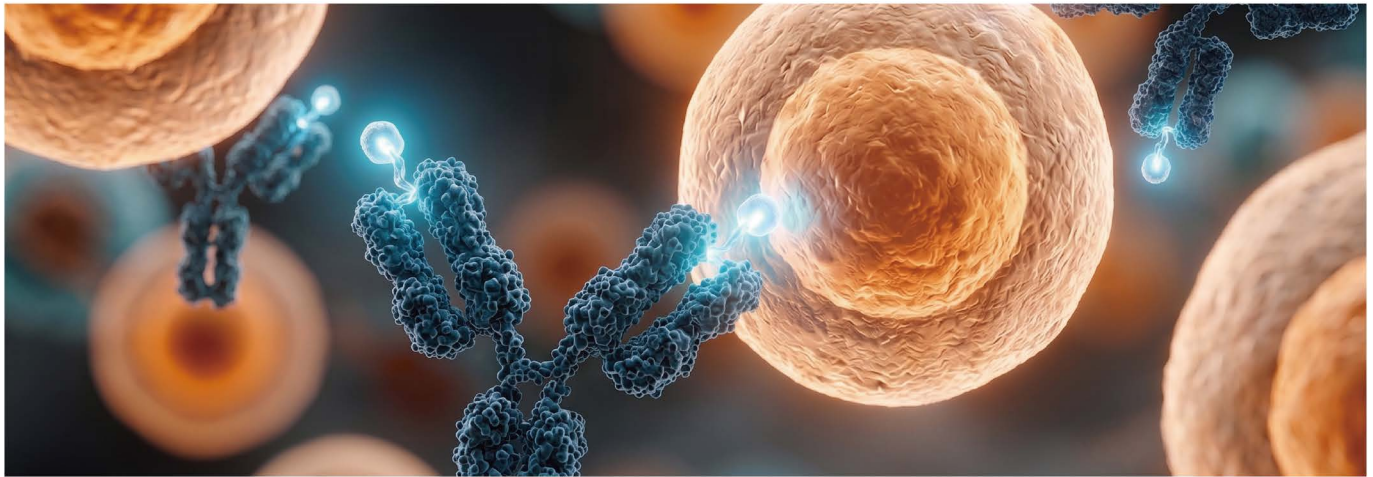


GeneTex's Antibodies for Antibody-Drug Conjugate (ADC) Targets

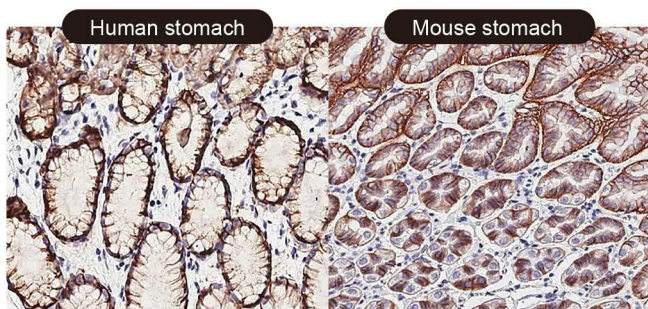
Your Expertise

Our Antibodies

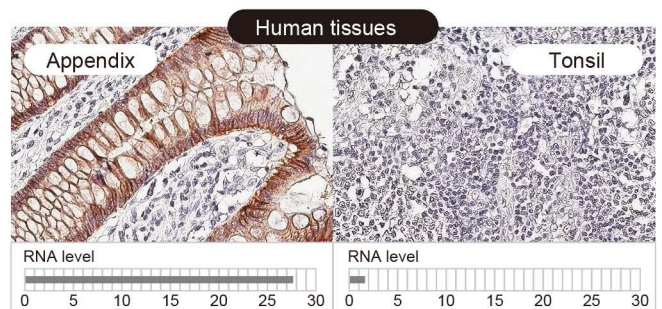
Accelerated Discovery



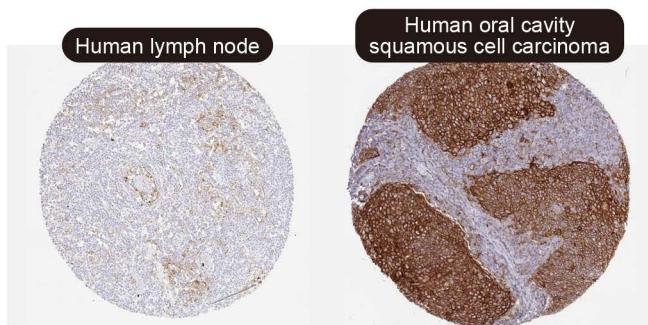
Antibody-drug conjugates (ADCs) combine monoclonal antibody specificity with potent payloads for targeted therapeutic delivery. As next-generation ADC platforms evolve, accurate characterization of target expression and internalization remains critical. GeneTex provides validated antibodies to support ADC target validation and translational research workflows.





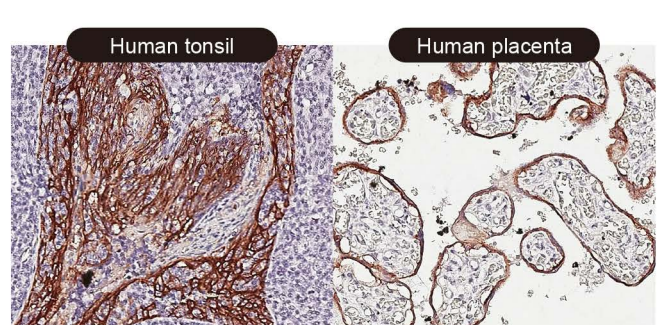
Claudin 18.2 antibody [HL5024] (GTX645117)
 






CDH17 / LI-Cadherin antibody [HL5636] (GTX646325)
  



PD-L1 antibody [H302] HistoMAX™ (GTX639925)
 



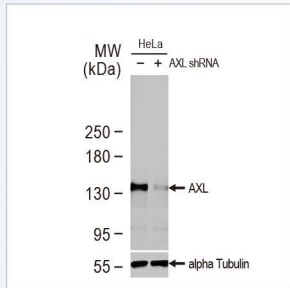
TROP2 / TACSTD2 antibody [HL5900] (GTX647224)
  

 HistoMAX  Recombinant  Orthogonal Validation  Carrier-Free

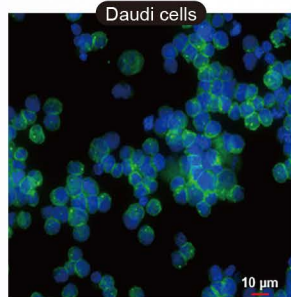


GeneTex's Antibodies for Antibody-Drug Conjugate(ADC) Targets

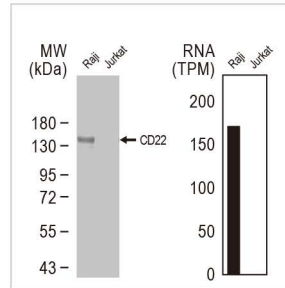
Selected Products



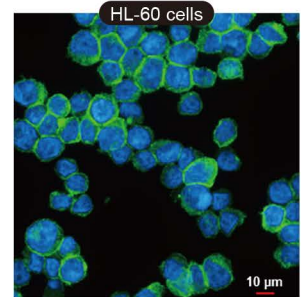
AXL antibody [HL2021]
(GTX637922)



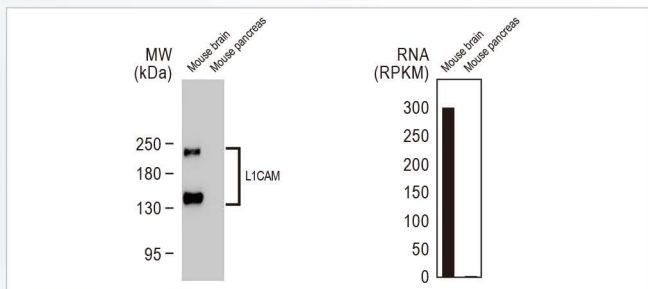
CD19 antibody [HL5319]
(GTX645784)



CD22 antibody [HL5598]
(GTX646280)



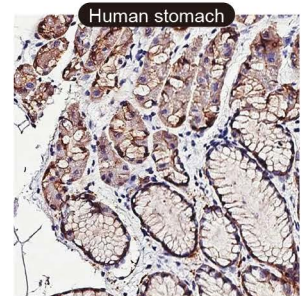
CD33 antibody [HL4991]
(GTX645077)



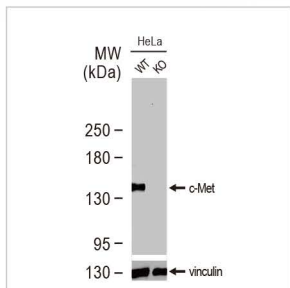
CD171 / L1CAM antibody [HL5786] (GTX646857)



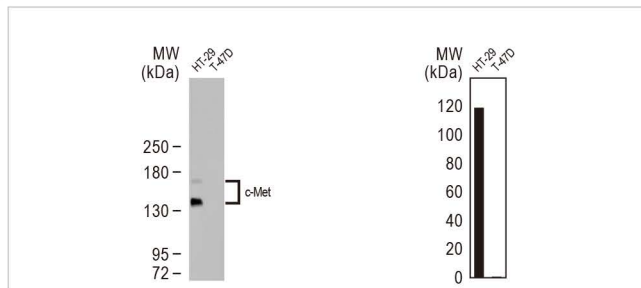
CDH17 / LI-Cadherin antibody [HL5394]
(GTX645962)



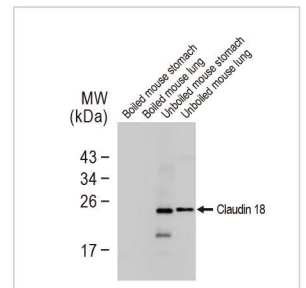
Claudin 18.2 antibody [HL5230] (GTX645486)



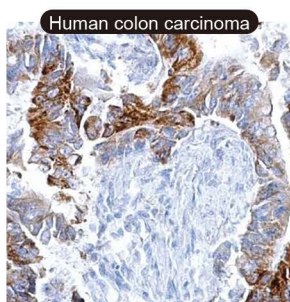
c-Met antibody [GT556]
(GTX631992)



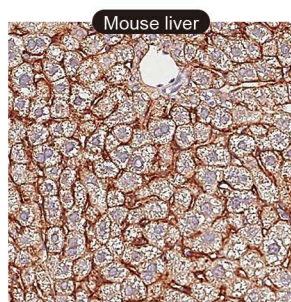
c-Met antibody [HL5899] (GTX647223)



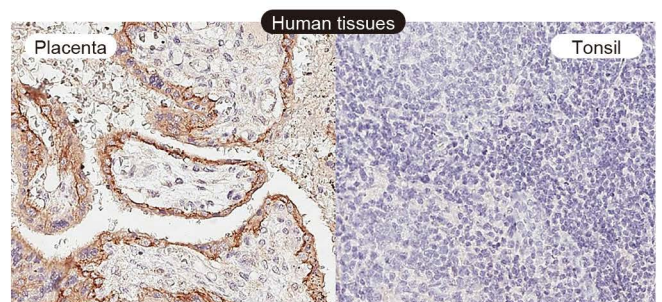
Claudin 18 antibody [HL5023] (GTX645116)



EGFR antibody [GT133]
(GTX628887)



EGFR antibody [HL3325]
(GTX641090)



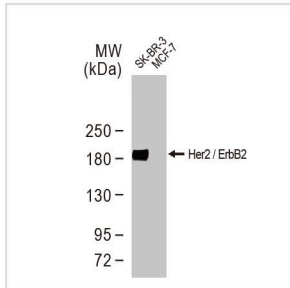
EGFR antibody [HL1097] (GTX642543)



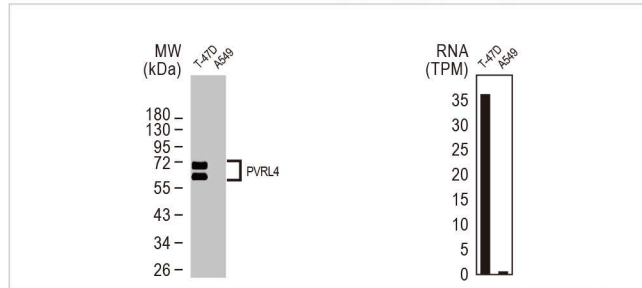


Citation Support
 KO/KD Validation
 Comparable Abs
 IP/MS Analysis
 Orthogonal Validation
 Protein Overexpression

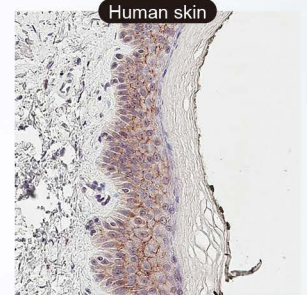
Recombinant
 HistoMAX
 Carrier-Free



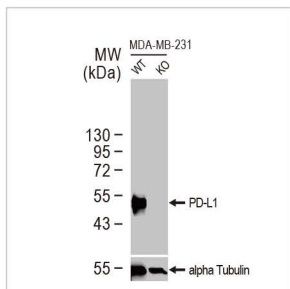
Her2 / ErbB2 antibody [HL3566] (GTX641472)



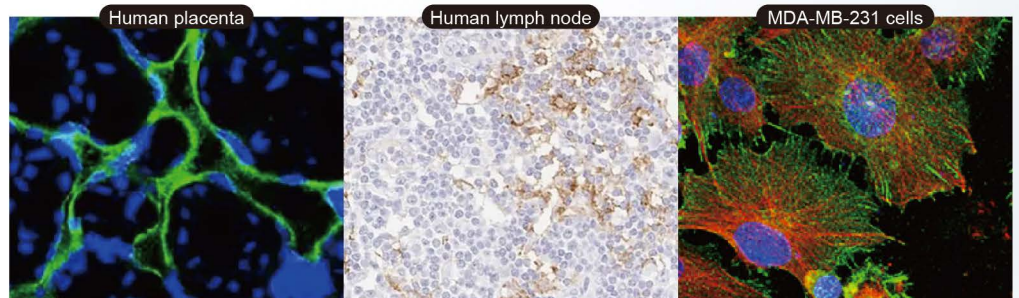
Nectin-4 / PVRL4 antibody [HL3520] (GTX641417)



Nectin-4 / PVRL4 antibody [HL3999] (GTX642330)



PD-L1 antibody [HL1056] (GTX636033)



PD-L1 antibody [HL1041] (GTX635975)

Site-Specific ADC Conjugation Kit-MMAE, 1 mg GTX448384- Kit Components

	Product Name	Amount	Storage temperature
Box 1	Pro Linker	1 x 10 µL	-20°C
	Linker-Payload (MMAE, DAR2)	1 x 10 µL	
Box 2	Solution 1	1 x 5 mL	4°C
	Solution 2	1 x 15 mL	
	Desalting Column	1 x 2 mL	
	Purification Filter	1 x 15 mL	





GeneTex's Antibodies for Antibody-Drug Conjugate(ADC) Targets

Selected Products

Target	Cat. No.	Product Name	Host & Clonality	Reactivity	Applications
AXL	GTX637922	AXL antibody [HL2021]	Rec Rb mAb	Hu	WB, ELISA
	GTX642023	AXL antibody [HL3804]	Rec Rb mAb	Hu, Ms, Rat	WB
CD19	GTX645784	CD19 antibody [HL5319]	Rec Rb mAb	Hu	WB, ICC/IF
CD22	GTX645787	CD22 antibody [HL5322]	Rec Rb mAb	Hu	WB
	GTX646280	CD22 antibody [HL5598]	Rec Rb mAb	Hu	WB
CD33	GTX645077	CD33 antibody [HL4991]	Rec Rb mAb	Hu	WB, ICC/IF
CD171	GTX646857	L1CAM antibody [HL5786]	Rec Rb mAb	Hu, Ms, Rat	WB
CDH17	GTX645249	LI-Cadherin antibody [GT329]	Rec Ms mAb	Rat	WB
	GTX645962	LI-Cadherin antibody [HL5394]	Rec Rb mAb	Hu	WB, IHC-P
	GTX645963	LI-Cadherin antibody [HL5395]	Rec Rb mAb	Hu, Ms	WB
	GTX646325	LI-Cadherin antibody [HL5636]	Rec Rb mAb	Hu	WB, IHC-P
Claudin 18	GTX645116	Claudin 18 antibody [HL5023]	Rec Rb mAb	Hu, Ms	WB
Claudin 18.2	GTX643617	Claudin 18.2 antibody [GT206]	Rec Ms mAb	Hu, Ms	IHC-P, IHC-P (cell pellet)
	GTX645117	Claudin 18.2 antibody [HL5024]	Rec Rb mAb	Hu, Ms	IHC-P, IHC-P (cell pellet)
	GTX645486	Claudin 18.2 antibody [HL5230]	Rec Rb mAb	Hu, Ms	WB, IHC-P, IHC-P (cell pellet)
c-Met	GTX631992	c-Met antibody [GT556]	Ms mAb	Hu	WB, FCM, IP
	GTX631993	c-Met antibody [GT1586]	Ms mAb	Hu	WB, IP
	GTX647223	c-Met antibody [HL5899]	Rec Rb mAb	Hu	WB
EGFR	GTX628887	EGFR antibody [GT133]	Ms mAb	Hu	WB, ICC/IF, IHC-P, IP
	GTX640663	EGFR antibody [HL3153]	Rec Rb mAb	Hu	WB
	GTX641090	EGFR antibody [HL3325]	Rec Rb mAb	Hu, Ms	WB, IHC-P
	GTX642543	EGFR antibody [HL1097]	Rec Rb mAb	Hu, Ms	WB, ICC/IF, IHC-P
HER2	GTX641472	Her2 / ErbB2 antibody [HL3566]	Rec Rb mAb	Hu	WB, FCM
	GTX647132	Her2 / ErbB2 antibody [HL5814]	Rec Rb mAb	Hu	WB
Nectin-4	GTX639621	PVRL4 antibody [HL2758]	Rec Rb mAb	Hu	WB, FCM
	GTX641417	PVRL4 antibody [HL3520]	Rec Rb mAb	Hu, Dog	WB
	GTX642330	PVRL4 antibody [HL3999]	Rec Rb mAb	Hu	IHC-P
PD-L1	GTX635975	PD-L1 antibody [HL1041]	Rec Rb mAb	Hu	WB, ICC/IF, IHC-P, FCM
	GTX636033	PD-L1 antibody [HL1056]	Rec Rb mAb	Hu	WB, ICC/IF
	GTX638348	PD-L1 antibody [HL2293]	Rec Rb mAb	Ms	WB
	GTX639925	PD-L1 antibody [H302] HistoMAX™	Rec Rb mAb	Hu	IHC-P
TROP2	GTX647224	TACSTD2 antibody [HL5900]	Rec Rb mAb	Hu	WB, IHC-P

Citation Support
 KO/KD Validation
 Comparable Abs
 IP/MS Analysis
 Orthogonal Validation
 Protein Overexpression
 Recombinant
 HistoMAX
 Carrier-Free