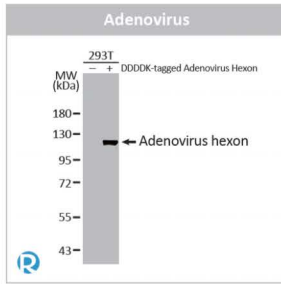
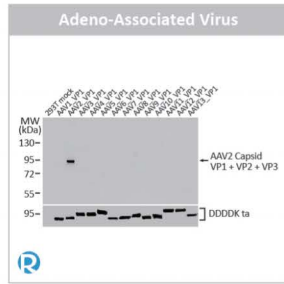


# Antibodies for Infectious Disease Research

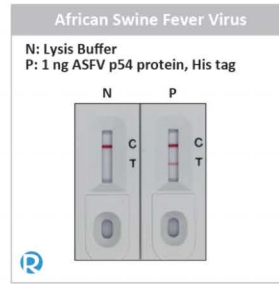




**Adenovirus hexon antibody [HL3684] (GTX641712)**



**AAV2 Capsid protein VP1 + VP2 + VP3 antibody [HL4940] (GTX645013)**



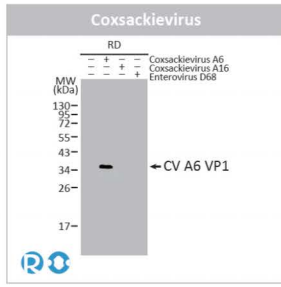
**ASFV p54 antibody [HL1287] (GTX636701)**



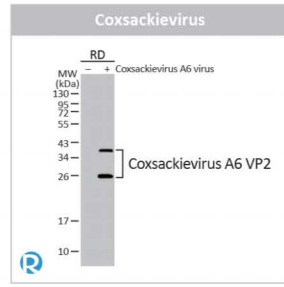
**ASFV p54 antibody [HL1218] (GTX636562)**

Virus	Product Name	Cat. No.	Clonality	Reactivity	Applications
Adenovirus	Adenovirus antibody [143]	GTX44492	Ms mAb	Adenovirus	ICC/IF, ELISA, Lateral Flow, Sandwich ELISA
	Adenovirus antibody [B025 (AD51)]	GTX27428	Ms mAb	Adenovirus	IHC-P, IHC-Fr, ELISA
	Adenovirus antibody [M58 + M73]	GTX23648	Ms multi Ab	Adenovirus	ICC/IF
	Adenovirus Fiber trimer antibody [2A6]	GTX23232	Ms mAb	Adenovirus	WB, ICC/IF
	Adenovirus hexon antibody [HL3684]	GTX641712	Rec Rb mAb	Adenovirus	WB, ICC/IF
	Adenovirus hexon antibody [HL3779]	GTX641978	Rec Rb mAb	Adenovirus	WB, ICC/IF
	Adenovirus hexon antibody [HL4129]	GTX642575	Rec Rb mAb	Adenovirus	WB
	Adenovirus hexon antibody [HL4593]	GTX644269	Rec Rb mAb	Adenovirus	ICC/IF
Adeno-Associated Virus	Adenovirus 40 & 41 antibody [HX9.B8]	GTX44494	Ms mAb	Adenovirus	ELISA
	Adeno-Associated virus antibody	GTX70324	Rb pAb	AAV	WB, ELISA
	AAV Capsid protein VP1 + VP2 + VP3 antibody [HL5414]	GTX645982	Rec Rb mAb	AAV1–AAV13	WB
	AAV1 + AAV6 Capsid protein VP1 + VP2 + VP3 antibody [HL4908]	GTX644973	Rec Rb mAb	AAV1, AAV6	WB, ICC/IF
	AAV2 Capsid protein VP1 + VP2 + VP3 antibody [HL4940]	GTX645013	Rec Rb mAb	AAV2	WB
	AAV3 + AAV4 Capsid protein VP1 + VP2 + VP3 antibody [HL5118]	GTX645312	Rec Rb mAb	AAV3, AAV4	WB
	AAV4 Capsid protein VP1 + VP2 + VP3 antibody	GTX70325	Rb pAb	AAV4	WB, ELISA
	AAV5 Capsid protein VP1 + VP2 + VP3 antibody	GTX70326	Rb pAb	AAV5	WB, ELISA
	AAV5 Capsid protein VP1 + VP2 + VP3 antibody [HL5367]	GTX645845	Rec Rb mAb	AAV5	WB
	AAV7 Capsid protein VP1 + VP2 + VP3 antibody [HL5296]	GTX645734	Rec Rb mAb	AAV7	WB
	AAV8 Capsid protein VP1 + VP2 + VP3 antibody [HL5471]	GTX646113	Rec Rb mAb	AAV8	WB
	AAV9 Capsid protein VP1 + VP2 + VP3 antibody [HL5206]	GTX645458	Rec Rb mAb	AAV9	WB
	AAV10 Capsid protein VP1 + VP2 + VP3 antibody [HL5369]	GTX645847	Rec Rb mAb	AAV1	WB
	AAV11 Capsid protein VP1 + VP2 + VP3 antibody [HL4942]	GTX645015	Rec Rb mAb	AAV11	WB, ICC/IF
	AAV12 Capsid protein VP1 + VP2 + VP3 antibody [HL4943]	GTX645016	Rec Rb mAb	AAV12	WB, ICC/IF
AAV12 Capsid protein VP1 + VP2 + VP3 antibody [HL5256]	GTX645512	Rec Rb mAb	AAV12	WB	
AAV13 Capsid protein VP1 + VP2 + VP3 antibody [HL5535]	GTX646198	Rec Rb mAb	AAV13	WB	
African Swine Fever Virus	ASFV p54 antibody	GTX135175	Rb pAb	ASFV	WB, ICC/IF, ELISA, Sandwich ELISA
	ASFV p54 antibody [GT1075]	GTX635691	Ms mAb	ASFV	WB, ICC/IF, IHC-P, ELISA, Lateral Flow, Sandwich ELISA
	ASFV p54 antibody [GT853]	GTX635690	Ms mAb	ASFV	WB, ICC/IF, IHC-P, ELISA, Lateral Flow, Sandwich ELISA
	ASFV p54 antibody [HL1218]	GTX636562	Rec Rb mAb	ASFV	WB, ICC/IF, ELISA, Lateral Flow, Sandwich ELISA
	ASFV p54 antibody [HL1219]	GTX636563	Rec Rb mAb	ASFV	WB, ICC/IF, ELISA, Lateral Flow, Sandwich ELISA
	ASFV p54 antibody [HL1286]	GTX636700	Rec Rb mAb	ASFV	WB, ICC/IF, ELISA, Lateral Flow, Sandwich ELISA
	ASFV p54 antibody [HL1287]	GTX636701	Rec Rb mAb	ASFV	WB, ICC/IF, ELISA, Lateral Flow, Sandwich ELISA
	ASFV p54 antibody [HL1289]	GTX636703	Rec Rb mAb	ASFV	WB, ICC/IF, ELISA, Lateral Flow, Sandwich ELISA
Avian Influenza A Virus	Avian Influenza A virus H5 HA (Hemagglutinin) antibody [HL5180]	GTX645432	Rec Rb mAb	Avian Influenza A virus	WB
	Avian Influenza A virus H5N1 HA (Hemagglutinin) antibody [1D10]	GTX632358	Ms mAb	Avian Influenza A virus	WB, ICC/IF
	Avian Influenza A virus H5N1 NA (Neuraminidase) antibody	GTX127984	Rb pAb	Avian Influenza A virus	WB
	Avian Influenza A virus H5N1 NA (Neuraminidase) antibody [HL4724]	GTX644728	Rec Rb mAb	Avian Influenza A virus	WB
	Avian Influenza A virus H5N1 NA (Neuraminidase) antibody [HL4722]	GTX644726	Rec Rb mAb	Avian Influenza A virus	WB, ICC/IF
	Avian Influenza A virus H5N3 HA (Hemagglutinin) antibody	GTX127299	Rb pAb	Avian Influenza A virus	WB
	Avian Influenza A virus H5N3 HA (Hemagglutinin) antibody [HL5182]	GTX645434	Rec Rb mAb	Avian Influenza A virus	WB
	Avian Influenza A virus H5N8 HA (Hemagglutinin) antibody [HL1550]	GTX637025	Rec Rb mAb	Avian Influenza A virus	WB, ELISA, IHC-P (cell pellet)
	Avian Influenza A virus H7N7 HA (Hemagglutinin) antibody	GTX127302	Rb pAb	Avian Influenza A virus	WB
	Avian Influenza A virus H7N7 HA (Hemagglutinin) antibody	GTX127303	Rb pAb	Avian Influenza A virus	WB
	Avian Influenza A virus H7N7 HA (Hemagglutinin) antibody [GT226]	GTX644237	Rec Ms mAb	Avian Influenza A virus	WB
	Avian Influenza A virus H7N7 HA (Hemagglutinin) antibody [HL5486]	GTX646150	Rec Rb mAb	Avian Influenza A virus	WB
	Avian Influenza A virus H9N2 HA (Hemagglutinin) antibody	GTX127305	Rb pAb	Avian Influenza A virus	WB
	Avian Influenza A virus H9N2 HA (Hemagglutinin) antibody	GTX127306	Rb pAb	Avian Influenza A virus	WB
	Avian Influenza A virus H9N2 HA (Hemagglutinin) antibody	GTX127307	Rb pAb	Avian Influenza A virus	WB
	Avian Influenza A virus H9N2 HA (Hemagglutinin) antibody [HL2406]	GTX638623	Rec Rb mAb	Avian Influenza A virus	WB
	Avian Influenza A virus H9N2 HA (Hemagglutinin) antibody [HL2408]	GTX638625	Rec Rb mAb	Avian Influenza A virus	WB, ICC/IF
	Avian Influenza A virus H9N2 HA (Hemagglutinin) antibody [HL4873]	GTX644938	Rec Rb mAb	Avian Influenza A virus	WB

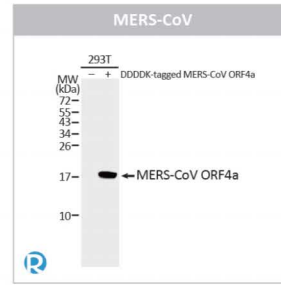




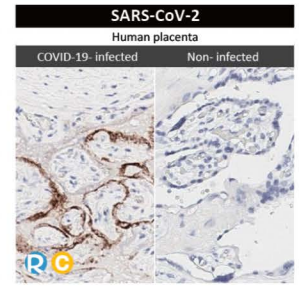
**Coxsackievirus A6 VP1 antibody [HL3698] (GTX641870)**



**Coxsackievirus A6 VP2 antibody [HL4965] (GTX645051)**

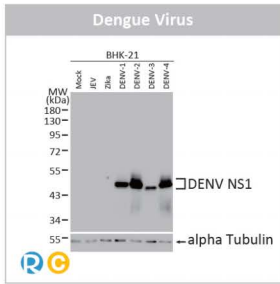


**MERS-CoV ORF4a antibody [HL4583] (GTX644259)**

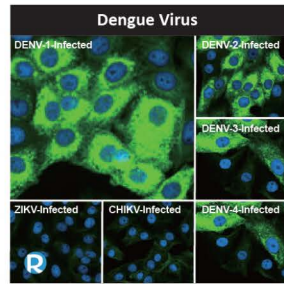


**SARS-CoV-2 (COVID-19) Spike S1 antibody [HL6] (GTX635654)**

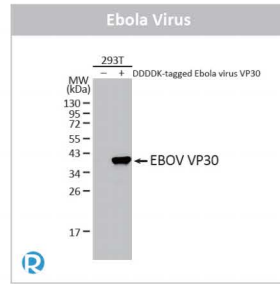
Virus	Product Name	Cat. No.	Clonality	Reactivity	Applications	
Dengue Virus	Dengue virus NS2B protein antibody [HL2512]	GTX638873	Rec Rb mAb	DENV2, DENV4	WB, ICC/IF	
	Dengue virus NS2B protein antibody [HL2513]	GTX638874	Rec Rb mAb	DENV1, DENV2, DENV3, DENV4	WB, ICC/IF	
	Dengue virus NS3 protein antibody	GTX124252	Rb pAb	DENV2	WB, ICC/IF, IHC-P, FCM, IP, ELISA	
	Dengue virus NS3 protein antibody [GT2811]	GTX629477	Ms mAb	DENV1, DENV2, DENV3, DENV4	WB, ICC/IF, ELISA	
	Dengue virus NS3 protein antibody [HL2239]	GTX638284	Rec Rb mAb	DENV1, DENV2, DENV3, DENV4	WB, ICC/IF	
	Dengue virus NS3 protein antibody [HL2634]	GTX639090	Rec Rb mAb	DENV1, DENV2, DENV3, DENV4, DENV	WB, ICC/IF	
	Dengue virus NS3 protein antibody [HL5233]	GTX645489	Rec Rb mAb	DENV1	WB	
	Dengue virus NS3 protein antibody [HL5510]	GTX646174	Rec Rb mAb	DENV3	WB	
	Dengue virus NS3 protein antibody [HL5132]	GTX645328	Rec Rb mAb	DENV2, DENV3, DENV4	WB	
	Dengue virus NS3 protein antibody [HL5134]	GTX645330	Rec Rb mAb	DENV2, DENV4	WB	
	Dengue virus NS4A protein antibody	GTX132069	Rb pAb	DENV2	WB, ICC/IF, IHC-P	
	Dengue virus NS4B protein antibody	GTX103349	Rb pAb	DENV2	WB, ICC/IF, FCM	
	Dengue virus NS4B protein antibody	GTX124250	Rb pAb	DENV2	WB, ICC/IF, FCM	
	Dengue virus NS4B protein antibody [HL3134]	GTX640626	Rec Rb mAb	DENV2, DENV4	WB, ICC/IF	
	Dengue virus NS4B protein antibody [HL3844]	GTX642078	Rec Rb mAb	DENV1, DENV2, DENV3, DENV4	WB, ICC/IF	
	Dengue virus Type 2 NS4B protein antibody	GTX113374	Rb pAb	DENV2	WB	
	Dengue virus Type 2 NS4B protein antibody	GTX113375	Rb pAb	DENV2	WB	
	Dengue virus NS5 protein antibody	GTX103350	Rb pAb	DENV2	WB, ICC/IF	
	Dengue virus NS5 protein antibody	GTX124253	Rb pAb	DENV2	WB, ICC/IF, FCM	
	Dengue virus NS5 protein antibody [GT353]	GTX629446	Ms mAb	DENV2, DENV3, DENV4	WB, ICC/IF, IP	
	Dengue virus NS5 protein antibody [GT361]	GTX629447	Ms mAb	DENV2, DENV3, DENV4	WB, ICC/IF	
	Dengue virus NS5 protein antibody [HL4675]	GTX644676	Rec Rb mAb	DENV1, DENV2, DENV3, DENV4	WB, ICC/IF	
	Dengue virus prM protein antibody	GTX128092	Rb pAb	DENV2	WB, ICC/IF	
	Dengue virus prM protein antibody	GTX128093	Rb pAb	DENV2	WB, ICC/IF	
	Dengue virus prM protein antibody	GTX134828	Rb pAb	DENV2	WB	
	Dengue virus prM protein antibody [HL3287]	GTX640941	Rec Rb mAb	DENV1, DENV2, DENV3, DENV4	WB, ICC/IF	
	Dengue virus prM protein antibody [HL3288]	GTX640942	Rec Rb mAb	DENV1, DENV2, DENV3, DENV4	WB, ICC/IF	
	Dengue virus prM protein antibody [HL4572]	GTX644248	Rec Rb mAb	DENV2	WB, ICC/IF	
	Dengue virus Type 1, 2, 3 & 4 antibody [D1-11(3)]	GTX29202	Ms mAb	DENV1, DENV2, DENV3, DENV4	WB, ICC/IF, ELISA	
	Ebola Virus	Ebola virus antibody [FE37]	GTX21926	Ms mAb	EBOV	WB, ELISA
		Ebola virus GP1 antibody	GTX134143	Rb pAb	EBOV	WB
		Ebola virus GP1 antibody	GTX134144	Rb pAb	EBOV	WB, ICC/IF
		Ebola virus GP1 antibody [HL5217]	GTX645473	Rec Rb mAb	EBOV	WB
Ebola virus GP1 antibody [HL5221]		GTX645477	Rec Rb mAb	EBOV	WB	
Ebola virus GP2 antibody		GTX134145	Rb pAb	EBOV	WB, ICC/IF	
Ebola virus GP2 antibody [HL5494]		GTX646158	Rec Rb mAb	EBOV	WB	
Ebola virus NP antibody		GTX134031	Rb pAb	EBOV	WB, ICC/IF	
Ebola virus VP30 antibody		GTX134035	Rb pAb	EBOV	WB, ICC/IF	
Ebola virus VP30 antibody		GTX134036	Rb pAb	EBOV	WB, ICC/IF	
Ebola virus VP30 antibody		GTX134037	Rb pAb	EBOV	WB, ICC/IF	
Ebola virus VP30 antibody [GT250]		GTX644497	Rec Ms mAb	EBOV	WB	
Ebola virus VP30 antibody [HL4235]		GTX643068	Rec Rb mAb	EBOV	WB, ICC/IF	
Ebola virus VP30 antibody [HL5282]		GTX645720	Rec Rb mAb	EBOV	WB	
Ebola virus VP35 antibody		GTX134032	Rb pAb	EBOV	WB, ICC/IF	
Ebola virus VP35 antibody		GTX134033	Rb pAb	EBOV	WB	
Ebola virus VP35 antibody [HL4726]		GTX644730	Rec Rb mAb	EBOV	WB, ICC/IF	
Ebola virus VP35 antibody [HL5918]		GTX647243	Rec Rb mAb	EBOV	WB	
Ebola virus VP40 antibody		GTX134034	Rb pAb	EBOV	WB, ICC/IF	
Ebola virus VP40 antibody [HL4648]		GTX644521	Rec Rb mAb	EBOV	WB, ICC/IF	
Ebola virus VP40 antibody [HL4649]	GTX644522	Rec Rb mAb	EBOV	WB, ICC/IF		
Enterovirus	Enterovirus D68 2B antibody	GTX134419	Rb pAb	EVD68	WB	



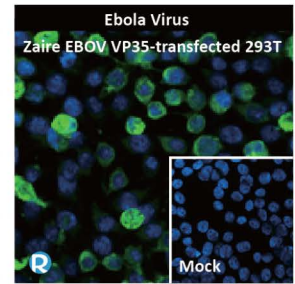
**Dengue virus NS1 protein antibody [HL2658] (GTX639322)**



**Dengue virus NS3 protein antibody [HL2239] (GTX638284)**

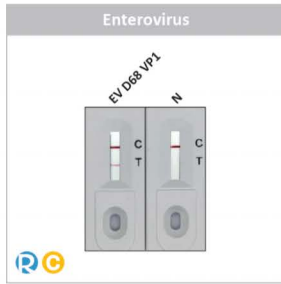


**Ebola virus VP30 antibody [GT250] (GTX644497)**

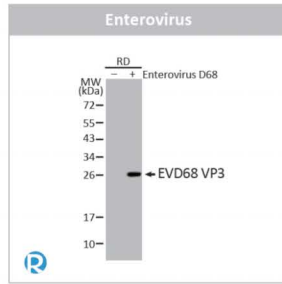


**Ebola virus VP35 antibody [HL4726] (GTX644730)**

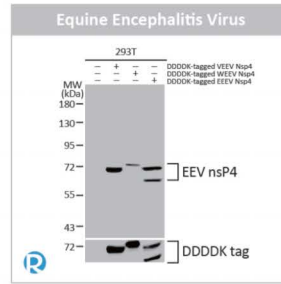
Virus	Product Name	Cat. No.	Clonality	Reactivity	Applications
Enterovirus	Enterovirus D68 VP1 antibody [HL4645]	GTX644518	Rec Rb mAb	EVD68	WB, ELISA, Sandwich ELISA
	Enterovirus D68 VP1 antibody [HL5333]	GTX645811	Rec Rb mAb	EVD68	Lateral Flow
	Enterovirus D68 VP1 antibody [HL5334]	GTX645812	Rec Rb mAb	EVD68	Lateral Flow
	Enterovirus D68 VP1 antibody	GTX132312	Rb pAb	EVD68	WB
	Enterovirus D68 VP1 antibody	GTX132313	Rb pAb	EVD68	WB, ICC/IF, IHC-P, FCM
	Enterovirus D68 VP1 antibody [GT11610]	GTX633688	Ms mAb	EVD68	WB, ICC/IF, ELISA, Sandwich ELISA, IHC-P (cell pellet)
	Enterovirus D68 VP1 antibody [GT1843]	GTX633770	Ms mAb	EVD68	WB, ICC/IF, IHC-P, ELISA, Lateral Flow, Sandwich ELISA, IHC-P (cell pellet)
	Enterovirus D68 VP1 antibody [HL1997]	GTX637898	Rec Rb mAb	EVD68	WB, ICC/IF, ELISA, Lateral Flow, Sandwich ELISA
	Enterovirus D68 VP2 antibody	GTX132314	Rb pAb	EVD68	WB, ICC/IF, IHC-Fr
	Enterovirus D68 VP2 antibody [HL3641]	GTX641632	Rec Rb mAb	EVD68	WB, ICC/IF
	Enterovirus D68 VP3 antibody	GTX132315	Rb pAb	EVD68	WB, IHC-P
	Enterovirus D68 VP3 antibody [GT1665]	GTX633706	Ms mAb	EVD68	WB
	Enterovirus D68 VP3 antibody [HL3202]	GTX640842	Rec Rb mAb	EVD68	WB
	Enterovirus 71 antibody	GTX124261	Rb pAb	EV71	WB, ICC/IF, IHC-P, ELISA
	Enterovirus 71 antibody [422-8D-4C-4D (10F0)]	GTX41306	Ms mAb	CVA6, EV71	ICC/IF, IHC-P, Functional Assay
	Enterovirus 71 2B antibody	GTX132343	Rb pAb	EV71	WB, IHC-P
	Enterovirus 71 2C antibody	GTX132354	Rb pAb	EV71	WB
	Enterovirus 71 2C antibody [HL4969]	GTX645055	Rec Rb mAb	CVA6, EV71	WB
	Enterovirus 71 3AB antibody	GTX132344	Rb pAb	EV71	WB, IHC-P
	Enterovirus 71 3B antibody [HL5692]	GTX646523	Rec Rb mAb	EV71	WB
	Enterovirus 71 3C antibody	GTX132357	Rb pAb	EV71	WB
	Enterovirus 71 3C antibody [B3]	GTX630191	Ms mAb	CVA6, EV71	WB, FCM
	Enterovirus 71 3C antibody [HL4973]	GTX645059	Rec Rb mAb	CVA6, EV71	WB
	Enterovirus 71 3CD antibody	GTX132355	Rb pAb	EV71	WB
	Enterovirus 71 3CD antibody	GTX132356	Rb pAb	EV71	WB
	Enterovirus 71 3D antibody [4]	GTX630193	Ms mAb	EV71	WB, ICC/IF, IP
	Enterovirus 71 3D antibody [HL5128]	GTX645324	Rec Rb mAb	CVA6, EV71	WB
	Enterovirus 71 VP1 antibody	GTX132338	Rb pAb	EV71	WB, ICC/IF, IHC-P
	Enterovirus 71 VP1 antibody	GTX132339	Rb pAb	EV71	WB, ICC/IF, IHC-P
	Enterovirus 71 VP1 antibody	GTX132600	Rb pAb	EV71	WB
	Enterovirus 71 VP1 antibody [GT185]	GTX633390	Ms mAb	EV71	ICC/IF, ELISA
	Enterovirus 71 VP1 antibody [GT9512]	GTX633583	Ms mAb	EV71	WB, ELISA
Enterovirus 71 VP1 antibody [HL1928]	GTX637687	Rec Rb mAb	EV71	WB, ICC/IF, ELISA, Sandwich ELISA	
Enterovirus 71 VP1 antibody [HL1929]	GTX637688	Rec Rb mAb	EV71	WB, ICC/IF, ELISA, Sandwich ELISA	
Enterovirus 71 VP1 antibody [HL4796]	GTX644808	Rec Rb mAb	EV71	WB, ICC/IF	
Enterovirus 71 VP2 antibody	GTX132340	Rb pAb	EV71	WB, ICC/IF, IHC-P	
Enterovirus 71 VP3 antibody	GTX132341	Rb pAb	EV71	WB, ICC/IF	
Enterovirus VP3 antibody [3654]	GTX04849	Ms mAb	EV	ICC/IF, ELISA, Sandwich ELISA	
Equine Encephalitis Virus	Equine Encephalitis Virus nsP2 antibody [HL1920]	GTX637669	Rec Rb mAb	VEEV, EEEV, WEEV	WB, ICC/IF, IHC-P (cell pellet)
	Equine Encephalitis Virus nsP4 antibody [HL2023]	GTX637924	Rec Rb mAb	VEEV, EEEV, WEEV	WB
Flavivirus	Flavivirus Capsid protein antibody	GTX134184	Rb pAb	DENV2, JEV, ZIKV	WB
	Flavivirus Envelope protein antibody	GTX134189	Rb pAb	DENV2, JEV	WB
	Flavivirus group antibody [3571]	GTX36818	Ms mAb	Flavivirus	ICC/IF, ELISA
	Flavivirus group antibody [D1-4G2-4-15 (4G2)]	GTX57154	Ms mAb	Flavivirus	WB, ICC/IF, IHC-P, IHC-Fr, FCM, ELISA
Foot and Mouth Disease Virus	Foot and Mouth Disease virus antibody [2D2]	GTX04110	Ms mAb	FMDV	ELISA, Immunodiffusion
	Foot and Mouth Disease virus, Nonstructural Protein (NS) antibody [B476M]	GTX42732	Ms mAb	FMDV	ELISA
	Foot and Mouth Disease virus, Serotype O1 antibody [B473M]	GTX42730	Ms mAb	FMDV	ELISA, Immunodiffusion
	Foot and Mouth Disease virus VP1 antibody	GTX04352	Rb pAb	FMDV	ELISA
Hepatitis A Virus	Hepatitis virus A59 nsp9 antibody [2C6.H1]	GTX03482	Ms mAb	HAV	WB, ICC/IF
	Hepatitis A virus antibody	GTX40269	Goat pAb	HAV	ELISA



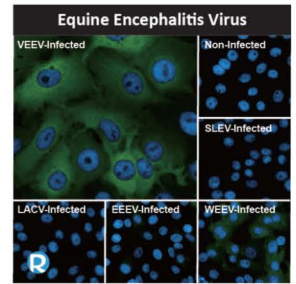
**Enterovirus D68 VP1 antibody [HL1997] (GTX637898)**



**Enterovirus D68 VP3 antibody [HL3202] (GTX640842)**

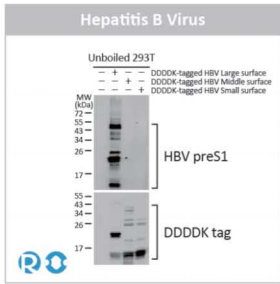


**Equine Encephalitis Virus nsP4 antibody [HL2023] (GTX637924)**

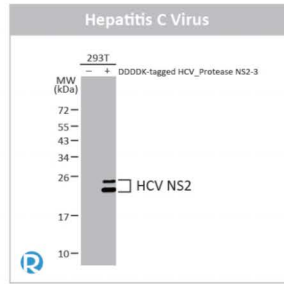


**Equine Encephalitis Virus nsP2 antibody [HL1920] (GTX637669)**

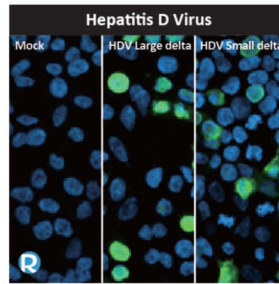
Virus	Product Name	Cat. No.	Clonality	Reactivity	Applications
Hepatitis A Virus	Hepatitis A virus antibody [1885]	GTX36854	Ms mAb	HAV	ICC/IF, ELISA
	Hepatitis A virus Surface Antigen antibody [BGN/B5B3 (B5-B3)]	GTX40741	Ms mAb	HAV	ELISA, IRMA
	Hepatitis A virus VP3 antibody [1881]	GTX36855	Ms mAb	HAV	ICC/IF, ELISA, IHC
Hepatitis B Virus	Hepatitis B virus antibody	GTX70323	Rb pAb	HBV	WB, ELISA
	Hepatitis B virus E antigen antibody [1894]	GTX36850	Ms mAb	HBV	ELISA, IHC, Sandwich ELISA
	Hepatitis B virus E antigen antibody [HBe8]	GTX11444	Ms mAb	HBV	ELISA, Sandwich ELISA
	Hepatitis B virus preS1 antibody [HL5350]	GTX645828	Rec Rb mAb	HBV	WB
	Hepatitis B virus Surface Antigen antibody [1834]	GTX36861	Ms mAb	HBV	WB, ELISA, IHC, Sandwich ELISA
	Hepatitis B virus Surface Antigen antibody [1834]	GTX40707	Ms mAb	HBV	WB, ICC/IF, ELISA
	Hepatitis B virus Surface Antigen antibody [B521M]	GTX41736	Ms mAb	HBV	ELISA, Lateral Flow, Sandwich ELISA
	Hepatitis B virus Surface Antigen antibody [Hs33]	GTX41723	Ms mAb	HBV	ELISA
Hepatitis C Virus	Hepatitis C virus X protein antibody [X36C]	GTX22741	Ms mAb	HBV	WB, ICC/IF, IP, ELISA, ChIP assay, IHC
	Hepatitis C virus antibody	GTX70331	Rb pAb	HCV	WB, IHC
	Hepatitis C virus Core + NS3 + NS4 antibody	GTX40324	Goat pAb	HCV	WB, ELISA
	Hepatitis C virus Core Antigen antibody	GTX131265	Rb pAb	HCV	WB
	Hepatitis C virus Core Antigen antibody [HL4956]	GTX645042	Rec Rb mAb	HCV	WB
	Hepatitis C virus Core Antigen antibody [HL4955]	GTX645041	Rec Rb mAb	HCV	ICC/IF
	Hepatitis C virus E2 protein antibody	GTX103353	Rb pAb	HCV	WB, ICC/IF, Blocking, EM, Neutralizing/Inhibition
	Hepatitis C virus NS2 protein antibody	GTX131832	Rb pAb	HCV	WB
	Hepatitis C virus NS2 protein antibody [HL4539]	GTX644207	Rec Rb mAb	HCV	WB, ICC/IF
	Hepatitis C virus NS3 protein antibody	GTX103356	Rb pAb	HCV	WB
	Hepatitis C virus NS3 protein antibody	GTX131269	Rb pAb	HCV	WB, IHC-P
	Hepatitis C virus NS3 protein antibody	GTX131276	Rb pAb	HCV	WB
	Hepatitis C virus NS3 protein antibody [HL4959]	GTX645045	Rec Rb mAb	HCV	WB
	Hepatitis C virus NS3 protein antibody [HL4961]	GTX645047	Rec Rb mAb	HCV	WB
	Hepatitis C virus NS4 protein antibody [1G7] (Biotin)	GTX22591	Ms mAb	HCV	WB, IHC-Fr, FCM, IP, ELISA
	Hepatitis C virus NS5 protein antibody [BGN/1246/5G7]	GTX40671	Ms mAb	HCV	WB, IHC-P, IHC-Fr, ELISA
	Hepatitis C virus NSSA protein antibody	GTX103358	Rb pAb	HCV	WB
	Hepatitis C virus NSSA protein antibody	GTX131272	Rb pAb	HCV	WB
	Hepatitis C virus NSSA protein antibody [HL5214]	GTX645470	Rec Rb mAb	HCV	WB
	Hepatitis C virus NSSB protein antibody	GTX131273	Rb pAb	HCV	WB
Hepatitis C virus NSSB protein antibody	GTX131274	Rb pAb	HCV	WB	
Hepatitis C virus NSSB protein antibody [5B-12B7]	GTX33940	Ms mAb	HCV	ICC/IF, IP, Neutralizing/Inhibition	
Hepatitis C virus NSSB protein antibody [HL5271]	GTX645709	Rec Rb mAb	HCV	WB	
Hepatitis C virus NSSB protein antibody [HL5277]	GTX645715	Rec Rb mAb	HCV	WB	
Hepatitis D Virus	Hepatitis D virus Large delta protein antibody	GTX135574	Rb pAb	HDV	WB, ICC/IF, IHC-P (cell pellet)
	Hepatitis D virus Large delta protein antibody [HL1051]	GTX636026	Rec Rb mAb	HDV	WB, ICC/IF
	Hepatitis D virus Large delta + Small delta antibody	GTX135575	Rb pAb	HDV	WB
	Hepatitis D virus Large delta + Small delta protein antibody	GTX135576	Rb pAb	HDV	WB
	Hepatitis D virus Large delta + Small delta protein antibody [HL1053]	GTX636028	Rec Rb mAb	HDV	WB, ICC/IF
Hepatitis D virus Large delta + Small delta protein antibody [HL1055]	GTX636030	Rec Rb mAb	HDV	WB, ICC/IF	
Hepatitis E Virus	Hepatitis E virus antibody	GTX70319	Rb pAb	HEV	WB, ELISA, IHC
	Hepatitis E virus antibody [S-13]	GTX19053	Ms mAb	HEV	ELISA
Hepatitis G	Hepatitis G antibody	GTX70318	Rb pAb	HGV	WB
Herpesvirus	Herpes virus 6 B Variant antibody [C3108-103]	GTX40649	Ms mAb	HHV6	ICC/IF, IHC-P
	Herpes virus 6 gp60/110 antibody [200]	GTX41665	Ms mAb	HHV6	WB, ICC/IF, IP, ELISA, IHC
	Herpes virus 6 gQ1 antibody [119]	GTX00685	Ms mAb	HHV6	WB, ICC/IF, FCM, IP, ELISA
	Herpes virus 7 gH antibody [2]	GTX00709	Ms mAb	HHV7	WB, ICC/IF, IP, ELISA
	Herpes virus Type 6 (HHV-6) p150 antibody [20]	GTX41660	Ms mAb	HHV6	ICC/IF, IP, ELISA, IHC
	HSV VP16 antibody	GTX30776	Rb pAb	HSV	WB, IP
	HSV1 antibody [10A3]	GTX01718	Ms mAb	HSV	WB, ICC/IF, IHC-P



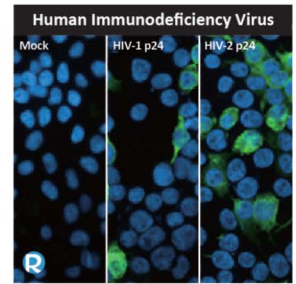
**Hepatitis B virus preS1 antibody [HL5350] (GTX645828)**



**Hepatitis C virus NS2 protein antibody [HL4539] (GTX644207)**

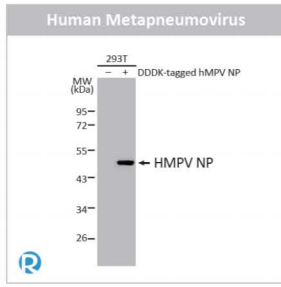


**Hepatitis D virus Large delta + Small delta protein antibody [HL1055] (GTX636030)**

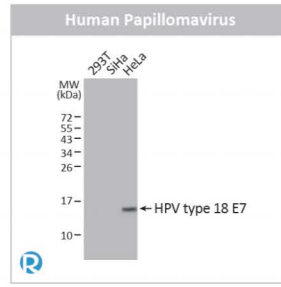


**HIV p24 antibody [HL3937] (GTX642182)**

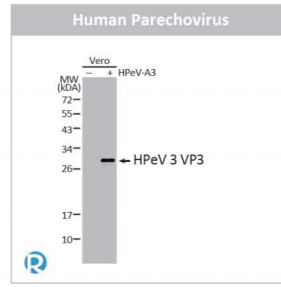
Virus	Product Name	Cat. No.	Clonality	Reactivity	Applications
Herpesvirus	HSV1 gC antibody [T96]	GTX28230	Ms mAb	HSV	WB, ICC/IF, ELISA
	HSV1 gD antibody [1-1-9]	GTX41418	Ms mAb	HSV	WB, ELISA
	HSV1 gE antibody [0112]	GTX36663	Ms mAb	HSV	ICC/IF, ELISA
	HSV1 VP21/VP22a antibody [LP13]	GTX76111	Ms mAb	HSV	WB, ICC/IF, IP, EM
	⊕ HSV1 + HSV2 antibody	GTX36599	Rb pAb	HSV	ICC/IF
	HSV1 + HSV2 antibody (HRP)	GTX36523	Rb pAb	HSV	WB, ICC/IF, ELISA, IHC
	HSV1 + HSV2 gB antibody [T111]	GTX28232	Ms mAb	HSV	ICC/IF, ELISA
	HSV1 + HSV2 gD antibody [0195]	GTX36650	Ms mAb	HSV	ICC/IF, ELISA, Lateral Flow
	HSV1 + HSV2 Nuclear antibody [0119]	GTX36659	Ms mAb	HSV	ICC/IF
	HSV2 antibody (HRP)	GTX19989	Sheep pAb	HSV	WB, ICC/IF, ELISA
	HSV2 gD antibody [DBM15.69]	GTX03305	Ms mAb	HSV	IHC-P
	HSV2 gE antibody [0111] (FITC)	GTX36662	Ms mAb	HSV	ICC/IF, ELISA
	⊕ HSV2 gG antibody [AP1 (B019)]	GTX76112	Ms mAb	HSV	WB, ICC/IF, IHC-Fr, IP
	HSV2 Glycoprotein G-2 antibody [H1206]	GTX41393	Ms mAb	HSV	WB
	HSV2 Nuclear antibody [0115]	GTX36661	Ms mAb	HSV	ICC/IF
	HSV6 37kDa early antigen antibody [2006]	GTX80736	Ms mAb	HSV	WB, ICC/IF, IP
	HSV6 Capsid antibody [2001]	GTX80733	Ms mAb	HSV	ICC/IF, IP, IHC
HSV6 Envelope antibody [2002]	GTX80734	Ms mAb	HSV	WB, ICC/IF, IP, IHC	
HSV6 gp90 antibody [2003]	GTX80735	Ms mAb	HSV	WB, IP, IHC	
HIV	⊕ HIV p24 antibody [HL3937]	GTX642182	Rec Rb mAb	HIV-1, HIV-2	WB, ICC/IF
	⊕ HIV p24 antibody [HL4058]	GTX642473	Rec Rb mAb	HIV-1, HIV-2	WB, ICC/IF
	HIV protease antibody [1696]	GTX28327	Ms mAb	HIV-1, HIV-2	WB, Dot, ELISA
	HIV1 antibody (Biotin)	GTX40823	Goat pAb	HIV-1	ICC/IF
	HIV1 gp41 antibody [5A1]	GTX19975	Ms mAb	HIV-1	WB, ELISA
	⊕ HIV1 gp120 antibody [GT45]	GTX641330	Rec Ms mAb	HIV-1	WB
	⊕ HIV1 gp120 antibody [GT46]	GTX641331	Rec Ms mAb	HIV-1	WB
	HIV1 integrase antibody [IN-2]	GTX80391	Ms mAb	HIV-1	WB, ICC/IF, IP
	HIV1 Nef antibody	GTX64124	Gpig pAb	HIV-1	WB, IP, Dot, ELISA
	HIV1 p15 antibody	GTX64125	Rb pAb	HIV-1	WB, IP, Dot, ELISA
	HIV1 p17 antibody	GTX64127	Gpig pAb	HIV-1	WB, IP, Dot, ELISA
	HIV1 P17 Gag antibody [17-1]	GTX80390	Ms mAb	HIV-1	WB, ICC/IF, FCM, IP
	⊕ HIV1 p24 antibody [HL3934]	GTX642179	Rec Rb mAb	HIV-1	WB, ICC/IF
	⊕ HIV1 p24 antibody [HL3935]	GTX642180	Rec Rb mAb	HIV-1	WB
	HIV1 p55 antibody	GTX64131	Rb pAb	HIV-1	WB, IP, Dot, ELISA
	HIV1 protease antibody	GTX64132	Rb pAb	HIV-1	WB, IP, Dot, ELISA, Neutralizing /Inhibition
	HIV1 Reverse transcriptase antibody	GTX64133	Rb pAb	HIV-1	WB, IP, Dot, ELISA
	⊕ HIV1 Vif antibody [319]	GTX80393	Ms mAb	HIV-1	WB, ICC/IF
	HIV1 virions antibody	GTX36600	Goat pAb	HIV-1	ICC/IF
	HIV2 gp36 antibody [BDI411]	GTX40452	Ms mAb	HIV-2	WB, ELISA
HIV2 gp39 antibody [HIV2gp39]	GTX13412	Ms mAb	HIV-2	ELISA	
HIV2 Nef antibody [4B5]	GTX80392	Rat mAb	HIV-2	WB, IP	
⊕ HIV2 p24 antibody [HL4545]	GTX644213	Rec Rb mAb	HIV-2	WB, ICC/IF	
Human Metapneumovirus	⊕ Human metapneumovirus Nucleoprotein antibody [4821]	GTX36792	Ms mAb	HMPV	WB, ICC/IF, ELISA, Lateral Flow, Sandwich ELISA
	⊕ Human metapneumovirus Nucleoprotein antibody [HL2919]	GTX640262	Rec Rb mAb	HMPV	WB, ICC/IF, Lateral Flow
	⊕ Human metapneumovirus Nucleoprotein antibody [HL2921]	GTX640264	Rec Rb mAb	HMPV	WB, ICC/IF, Lateral Flow
	⊕ Human metapneumovirus Nucleoprotein antibody [HL2924]	GTX640267	Rec Rb mAb	HMPV	WB, ICC/IF, Lateral Flow
	⊕ Human metapneumovirus Nucleoprotein antibody [GT298]	GTX645024	Rec Ms mAb	HMPV	WB
Human Papillomavirus	Human Papillomavirus type 11 E7 antibody [B021M]	GTX41556	Ms mAb	HPV11	WB, ELISA, Sandwich ELISA
	⊕ Human Papillomavirus type 16 E6 antibody	GTX132686	Rb pAb	HPV16	WB
	⊕ Human Papillomavirus type 16 E7 antibody	GTX133411	Rb pAb	HPV16	WB
	⊕ Human Papillomavirus type 16 E7 antibody [HL1647]	GTX637228	Rec Rb mAb	HPV16	ICC/IF, ELISA, Lateral Flow, Sandwich ELISA



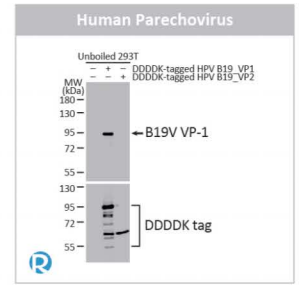
**Human Metapneumovirus Nucleoprotein antibody [HL2919] (GTx640262)**



**Human Papillomavirus type 18 E7 antibody [HL2788] (GTx639656)**

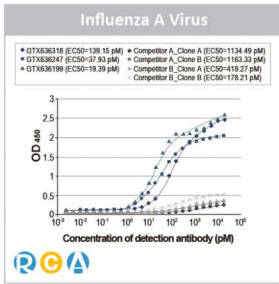


**Human Parvovirus 1+3 VP3 antibody [HL2443] (GTx640154)**

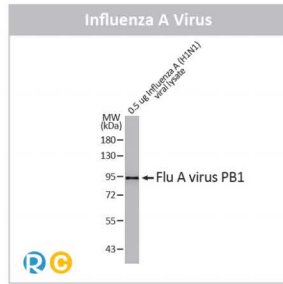


**Human Parvovirus B19 VP1 antibody [HL5713] (GTx646544)**

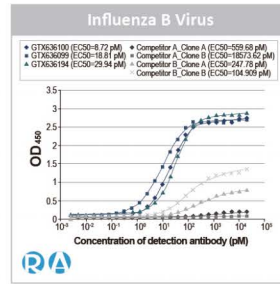
Virus	Product Name	Cat. No.	Clonality	Reactivity	Applications
Human Papillomavirus	Human Papillomavirus type 16 E7 antibody [HL1821]	GTX637546	Rec Rb mAb	HPV16	WB, ELISA, Lateral Flow, Sandwich ELISA
	Human Papillomavirus type 16 L1 antibody [CamVir 1]	GTX73652	Ms mAb	HPV	WB, ICC/IF, IHC-P, IP
	Human Papillomavirus type 16/18 E7 antibody [718-15]	GTX40864	Ms mAb	HPV16, HPV18	WB, ELISA
	Human Papillomavirus type 18 E2 antibody	GTX133373	Rb pAb	HPV18	WB
	Human Papillomavirus type 18 E6 antibody	GTX132687	Rb pAb	HPV18	WB
	Human Papillomavirus type 18 E7 antibody	GTX133412	Rb pAb	HPV18	WB, ICC/IF
	Human Papillomavirus type 18 E7 antibody [GT881]	GTX634337	Ms mAb	HPV18	WB, ICC/IF, ELISA, Lateral Flow, Sandwich ELISA
	Human Papillomavirus type 18 E7 antibody [HL2522]	GTX638883	Rec Rb mAb	HPV18	WB, ELISA, Lateral Flow, Sandwich ELISA
	Human Papillomavirus type 18 E7 antibody [HL2787]	GTX639655	Rec Rb mAb	HPV18	WB
Human Parvovirus	Human Parvovirus 1+3 VP0 antibody [HL2443]	GTX638759	Rec Rb mAb	HPeV1, HPeV3	WB, ICC/IF
	Human Parvovirus 1+3 VP1 antibody [HL2427]	GTX638649	Rec Rb mAb	HPeV1, HPeV3	WB, ICC/IF
	Human Parvovirus 1+3 VP3 antibody [HL2443]	GTX640154	Rec Rb mAb	HPeV1, HPeV3	WB
	Human Parvovirus 3 VP3 antibody [HL2544]	GTX638913	Rec Rb mAb	HPeV3	WB, ICC/IF
Human Parvovirus	Human parvovirus B19 Capsid protein VP1 + VP2 antibody [HL5562]	GTX646236	Rec Rb mAb	B19V	WB
	Human parvovirus B19 VP1 antibody [HL5713]	GTX646544	Rec Rb mAb	B19V	WB
	Human parvovirus B19 VP1 antibody [HL5827]	GTX647145	Rec Rb mAb	B19V	WB, ELISA, Sandwich ELISA
	Human parvovirus B19 VP1 antibody [HL5828]	GTX647146	Rec Rb mAb	B19V	WB, ELISA, Sandwich ELISA
	Human parvovirus B19 VP1 antibody [HL5712]	GTX646543	Rec Rb mAb	B19V	ELISA, Sandwich ELISA
Influenza A Virus	Influenza A virus H1N1 HA (Hemagglutinin) antibody	GTX127295	Rb pAb	H1N1	WB
	Influenza A virus H1N1 HA (Hemagglutinin) antibody	GTX127357	Rb pAb	H1N1	WB, ICC/IF, IHC-P, ELISA, Multiplexing
	Influenza A virus H1N1 HA (Hemagglutinin) antibody [GT223]	GTX629750	Ms mAb	H1N1	WB, ICC/IF
	Influenza A virus H1N1 HA (Hemagglutinin) antibody [GT521]	GTX629746	Ms mAb	H1N1	WB
	Influenza A virus H1N1 HA (Hemagglutinin) antibody [HL3261]	GTX640908	Rec Rb mAb	H1N1	WB
	Influenza A virus H1N1 HA (Hemagglutinin) antibody [HL4914]	GTX644987	Rec Rb mAb	H1N1	WB
	Influenza A virus H1N1 NA (Neuraminidase) antibody	GTX125974	Rb pAb	H1N1	WB, ICC/IF
	Influenza A virus H1N1 NA (Neuraminidase) antibody [GT172]	GTX629695	Ms mAb	H1N1	WB
	Influenza A virus H1N1 NA (Neuraminidase) antibody [GT288]	GTX629696	Ms mAb	H1N1	WB, ICC/IF
	Influenza A virus H1N1 NA (Neuraminidase) antibody [HL1108]	GTX636323	Rec Rb mAb	H1N1	WB, ICC/IF
	Influenza A virus H3N2 HA (Hemagglutinin) antibody	GTX127363	Rb pAb	Influenza A virus	WB, ICC/IF, IHC-P
	Influenza A virus H3N2 HA (Hemagglutinin) antibody [HL2393]	GTX638602	Rec Rb mAb	Influenza A virus	WB, ICC/IF
	Influenza A virus HA (Hemagglutinin) antibody [HL3262]	GTX640909	Rec Rb mAb	Influenza A virus	WB
	Influenza A virus M1 (matrix protein) antibody	GTX125928	Rb pAb	Influenza A virus	WB, ICC/IF, IHC-Fr
	Influenza A virus M1 (matrix protein) antibody	GTX127356	Rb pAb	Influenza A virus	WB, ELISA
	Influenza A virus M1 (matrix protein) antibody [HL1273]	GTX636675	Rec Rb mAb	Influenza A virus	WB, ICC/IF, IHC-P (cell pellet)
	Influenza A virus M1 (matrix protein) antibody [HL1275]	GTX636677	Rec Rb mAb	Influenza A virus	WB, ICC/IF, IHC-P (cell pellet)
	Influenza A virus M1 (matrix protein) antibody [HL4788]	GTX644800	Rec Rb mAb	Influenza A virus	WB, ICC/IF
	Influenza A virus M2 (matrix protein) antibody	GTX125951	Rb pAb	Influenza A virus	WB, ICC/IF, EM
	Influenza A virus M2 (matrix protein) antibody [HL1856]	GTX637581	Rec Rb mAb	Influenza A virus	WB, ICC/IF
	Influenza A virus NS1 (nonstructural protein) antibody	GTX125990	Rb pAb	Influenza A virus	WB, ICC/IF, IHC-P
	Influenza A virus NS1 (nonstructural protein) antibody [GT1653]	GTX633685	Ms mAb	Influenza A virus	WB
	Influenza A virus NS1 (nonstructural protein) antibody [GT1943]	GTX633686	Ms mAb	Influenza A virus	WB
	Influenza A virus NS1 (nonstructural protein) antibody [HL2130]	GTX638102	Rec Rb mAb	Influenza A virus	WB, ICC/IF
	Influenza A virus NS2 / NEP antibody	GTX125952	Rb pAb	Influenza A virus	WB
	Influenza A virus NS2 / NEP antibody	GTX125953	Rb pAb	Influenza A virus	WB, ICC/IF, IP
	Influenza A virus NS2 / NEP antibody [HL4505]	GTX644075	Rec Rb mAb	Influenza A virus	WB, ICC/IF
Influenza A virus Nucleoprotein antibody	GTX125989	Rb pAb	Influenza A virus	WB, ICC/IF, IHC-P, IP, ELISA, Sandwich ELISA	
Influenza A virus Nucleoprotein antibody [GT1236]	GTX629633	Ms mAb	Influenza A virus	WB, ICC/IF, IHC-Fr, ELISA, Sandwich ELISA	
Influenza A virus Nucleoprotein antibody [GT23]	GTX641086	Rec Ms mAb	Influenza A virus	WB, ELISA	
Influenza A virus Nucleoprotein antibody [GT778]	GTX629544	Ms mAb	Influenza A virus	WB	



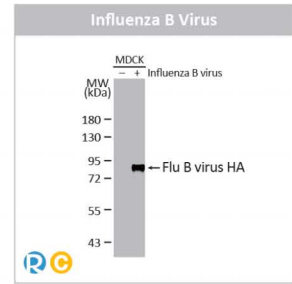
**Influenza A virus Nucleoprotein antibody [HL1089] (GTX636247)**



**Influenza A virus PB1 protein antibody [HL1714] (GTX637313)**

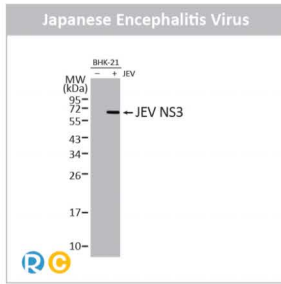


**Influenza B virus Nucleoprotein antibody [HL1069] (GTX636100)**

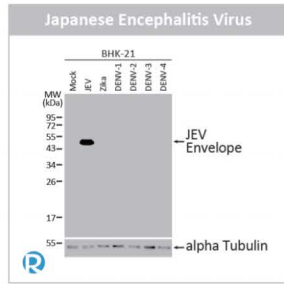


**Influenza B virus Hemagglutinin (HA) antibody [HL2208] (GTX638212)**

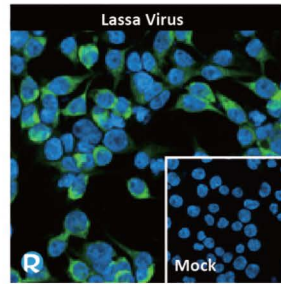
Virus	Product Name	Cat. No.	Clonality	Reactivity	Applications
Influenza A Virus	Influenza A virus Nucleoprotein antibody [HL1078]	GTX636199	Rec Rb mAb	Influenza A virus	WB, ICC/IF, ELISA, Lateral Flow, Sandwich ELISA
	Influenza A virus Nucleoprotein antibody [HL1089]	GTX636247	Rec Rb mAb	Influenza A virus	WB, ICC/IF, ELISA, Lateral Flow, Sandwich ELISA, IHC-P (cell pellet)
	Influenza A virus Nucleoprotein antibody [HL1098]	GTX636282	Rec Rb mAb	Influenza A virus	WB, ICC/IF, ELISA, Sandwich ELISA
	Influenza A virus Nucleoprotein antibody [HL1103]	GTX636318	Rec Rb mAb	Influenza A virus	WB, ICC/IF, ELISA, Lateral Flow, Sandwich ELISA, IHC-P (cell pellet)
	Influenza A virus Nucleoprotein antibody [HL1321]	GTX636739	Rec Rb mAb	Influenza A virus	WB
	Influenza A virus Nucleoprotein antibody [HL1323]	GTX636741	Rec Rb mAb	Influenza A virus	WB, ICC/IF
	Influenza A virus Nucleoprotein antibody [HL1952]	GTX637789	Rec Rb mAb	Influenza A virus	Lateral Flow
	Influenza A virus Nucleoprotein antibody [HL1953]	GTX637790	Rec Rb mAb	Influenza A virus	Lateral Flow
	Influenza A virus Nucleoprotein antibody [HL4098]	GTX642544	Rec Rb mAb	Influenza A virus	ELISA, Sandwich ELISA
	Influenza A virus PA protein antibody	GTX118991	Rb pAb	Influenza A virus	WB, ICC/IF
	Influenza A virus PA protein antibody	GTX125932	Rb pAb	Influenza A virus	WB, ICC/IF
	Influenza A virus PA protein antibody	GTX125933	Rb pAb	Influenza A virus	WB, ICC/IF
	Influenza A virus PA protein antibody [HL1387]	GTX636827	Rec Rb mAb	Influenza A virus	WB
	Influenza A virus PA protein antibody [HL1388]	GTX636828	Rec Rb mAb	Influenza A virus	WB, ICC/IF
	Influenza A virus PA protein antibody [HL4504]	GTX644074	Rec Rb mAb	Influenza A virus	WB, ICC/IF
	Influenza A virus PA protein antibody [HL4953]	GTX645039	Rec Rb mAb	Influenza A virus	WB, ICC/IF
	Influenza A virus PB1 protein antibody	GTX125923	Rb pAb	Influenza A virus	WB, ICC/IF
	Influenza A virus PB1 protein antibody [HL1714]	GTX637313	Rec Rb mAb	Influenza A virus	WB, ICC/IF, IP
	Influenza A virus PB1 protein antibody [HL1715]	GTX637314	Rec Rb mAb	Influenza A virus	WB, IHC-P (cell pellet)
	Influenza A virus PB2 protein antibody	GTX125925	Rb pAb	Influenza A virus	WB, ICC/IF
Influenza A virus PB2 protein antibody	GTX125926	Rb pAb	Influenza A virus	WB, ICC/IF, IP	
Influenza A virus PB2 protein antibody [HL1992]	GTX637893	Rec Rb mAb	Influenza A virus	WB, ICC/IF	
Influenza A virus PB2 protein antibody [HL1994]	GTX637895	Rec Rb mAb	Influenza A virus	WB, ICC/IF	
Influenza A virus PB2 protein antibody [HL4720]	GTX644724	Rec Rb mAb	Influenza A virus	WB, ICC/IF	
Influenza B Virus	Influenza B virus antibody	GTX128544	Rb pAb	Influenza B virus	WB
	Influenza B virus Hemagglutinin (HA) antibody	GTX128542	Rb pAb	Influenza B virus	WB, ICC/IF, ELISA
	Influenza B virus Hemagglutinin (HA) antibody	GTX128543	Rb pAb	Influenza B virus	WB, ICC/IF
	Influenza B virus Hemagglutinin (HA) antibody [HL2208]	GTX638212	Rec Rb mAb	Influenza B virus	WB, ICC/IF, ELISA
	Influenza B virus Hemagglutinin (HA) antibody [HL5631]	GTX646320	Rec Rb mAb	Influenza B virus	WB
	Influenza B virus M (matrix protein) antibody	GTX128536	Rb pAb	Influenza B virus	WB
	Influenza B virus M (matrix protein) antibody	GTX128537	Rb pAb	Influenza B virus	WB, ICC/IF
	Influenza B virus M (matrix protein) antibody [HL5032]	GTX645202	Rec Rb mAb	Influenza B virus	WB
	Influenza B virus M (matrix protein) antibody [HL5332]	GTX645810	Rec Rb mAb	Influenza B virus	WB
	Influenza B virus Neuraminidase (NA) antibody	GTX128540	Rb pAb	Influenza B virus	ICC/IF
	Influenza B virus Neuraminidase (NA) antibody	GTX128541	Rb pAb	Influenza B virus	ICC/IF
	Influenza B virus Neuraminidase (NA) antibody [HL1476]	GTX636950	Rec Rb mAb	Influenza B virus	WB, ICC/IF, IHC-P (cell pellet)
	Influenza B virus Neuraminidase (NA) antibody [HL4609]	GTX644473	Rec Rb mAb	Influenza B virus	ICC/IF
	Influenza B virus Neuraminidase (NA) antibody [HL4607]	GTX644471	Rec Rb mAb	Influenza B virus	WB, ICC/IF
	Influenza B virus Nucleoprotein antibody	GTX128538	Rb pAb	Influenza B virus	WB, ICC/IF, ELISA, Sandwich ELISA
	Influenza B virus Nucleoprotein antibody	GTX128539	Rb pAb	Influenza B virus	WB, ICC/IF, ELISA, Sandwich ELISA
	Influenza B virus Nucleoprotein antibody	GTX135819	Rb pAb	Influenza B virus	WB, ICC/IF, IHC-P, IHC-P (cell pellet)
	Influenza B virus Nucleoprotein antibody [GT371]	GTX629882	Ms mAb	Influenza B virus	WB, ICC/IF, ELISA, Sandwich ELISA
	Influenza B virus Nucleoprotein antibody [GT382]	GTX629883	Ms mAb	Influenza B virus	WB, ICC/IF, ELISA, Sandwich ELISA
	Influenza B virus Nucleoprotein antibody [HL1068]	GTX636099	Rec Rb mAb	Influenza B virus	WB, ICC/IF, ELISA, Lateral Flow, Sandwich ELISA
Influenza B virus Nucleoprotein antibody [HL1069]	GTX636100	Rec Rb mAb	Influenza B virus	WB, ICC/IF, ELISA, Lateral Flow, Sandwich ELISA	
Influenza B virus Nucleoprotein antibody [HL1073]	GTX636194	Rec Rb mAb	Influenza B virus	WB, ICC/IF, ELISA, Lateral Flow, Sandwich ELISA	
Influenza B virus Nucleoprotein antibody [HL1076]	GTX636197	Rec Rb mAb	Influenza B virus	ELISA	
Japanese Encephalitis Virus	Japanese encephalitis virus Core protein C antibody	GTX125860	Rb pAb	JEV	WB
	Japanese encephalitis virus Core protein C antibody	GTX131368	Rb pAb	JEV	WB, ICC/IF
	Japanese encephalitis virus Core protein C antibody [GT1178]	GTX634153	Ms mAb	JEV	WB
	Japanese encephalitis virus Core protein C antibody [GT12112]	GTX634170	Ms mAb	JEV	WB



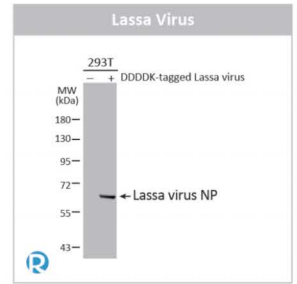
**Japanese encephalitis virus NS3 antibody [HL2472] (GTX638821)**



**Japanese encephalitis virus Envelope antibody [HL2517] (GTX638878)**

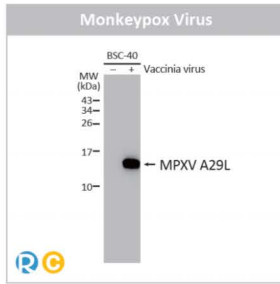


**Lassa virus Glycoprotein G1 antibody [HL2536] (GTX638905)**

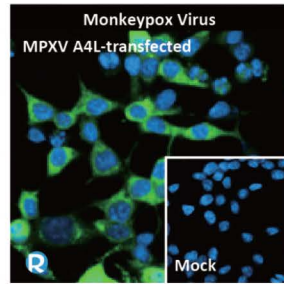


**Lassa virus Nucleoprotein antibody [HL4044] (GTX642459)**

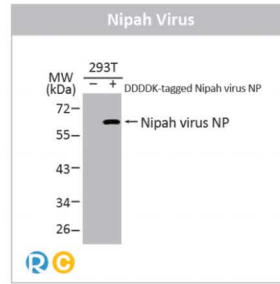
Virus	Product Name	Cat. No.	Clonality	Reactivity	Applications
Japanese Encephalitis Virus	Japanese encephalitis virus Core protein C antibody [GT127]	GTX634152	Ms mAb	JEV	WB, ICC/IF
	Japanese encephalitis virus Core protein C antibody [HL5002]	GTX645095	Rec Rb mAb	JEV	WB
	Japanese encephalitis virus Envelope antibody	GTX125867	Rb pAb	JEV	WB, ICC/IF, IHC-P, IHC-P (cell pellet)
	Japanese encephalitis virus Envelope antibody [HL2517]	GTX638878	Rec Rb mAb	JEV	WB, ICC/IF
	Japanese encephalitis virus NS1 antibody	GTX125866	Rb pAb	JEV	WB, ICC/IF
	Japanese encephalitis virus NS1 antibody	GTX131369	Rb pAb	JEV	WB, ICC/IF
	Japanese encephalitis virus NS1 antibody	GTX131370	Rb pAb	JEV	WB, ICC/IF
	Japanese encephalitis virus NS1 antibody [HL4792]	GTX644804	Rec Rb mAb	JEV	WB
	Japanese encephalitis virus NS1' antibody	GTX132499	Rb pAb	JEV	WB, ICC/IF
	Japanese encephalitis virus NS1' antibody	GTX132985	Rb pAb	JEV	WB
	Japanese encephalitis virus NS1' antibody [GT1345]	GTX633962	Ms mAb	JEV	WB, ICC/IF
	Japanese encephalitis virus NS1 antibody [GT1410]	GTX633820	Ms mAb	JEV	WB, ICC/IF, IHC-P (cell pellet)
	Japanese encephalitis virus NS1 antibody [GT1448]	GTX633819	Ms mAb	JEV	WB, ICC/IF
	Japanese encephalitis virus NS1' antibody [GT25111]	GTX633961	Ms mAb	JEV	WB, ICC/IF
	Japanese encephalitis virus NS1 antibody [GT292]	GTX644979	Rec Ms mAb	JEV	WB
	Japanese encephalitis virus NS1 antibody [GT481]	GTX633812	Ms mAb	JEV	WB, ICC/IF
	Japanese encephalitis virus NS1' antibody [GT483]	GTX634167	Ms mAb	JEV	WB
	Japanese encephalitis virus NS1 antibody [HL4503]	GTX644073	Rec Rb mAb	JEV	WB, ICC/IF
	Japanese encephalitis virus NS1 antibody [GT315]	GTX645190	Rec Ms mAb	JEV	WB
	Japanese encephalitis virus NS1' antibody [HL5789]	GTX646860	Rec Rb mAb	JEV	WB
	Japanese encephalitis virus NS2B antibody	GTX125972	Rb pAb	JEV	WB, ICC/IF
	Japanese encephalitis virus NS2B antibody [HL5581]	GTX646263	Rec Rb mAb	JEV	WB
	Japanese encephalitis virus NS3 antibody	GTX125868	Rb pAb	JEV	WB, ICC/IF, IHC-P, IHC-Fr
	Japanese encephalitis virus NS3 antibody [HL2472]	GTX638821	Rec Rb mAb	JEV	WB, ICC/IF
	Japanese encephalitis virus NS4A antibody	GTX132028	Rb pAb	JEV	WB, ICC/IF
	Japanese encephalitis virus NS4B antibody	GTX125865	Rb pAb	JEV	WB, ICC/IF
	Japanese encephalitis virus NS5 antibody	GTX131359	Rb pAb	JEV	WB, ICC/IF
	Japanese encephalitis virus NS5 antibody	GTX131360	Rb pAb	JEV	WB, ICC/IF
	Japanese encephalitis virus NS5 antibody [HL5380]	GTX645948	Rec Rb mAb	JEV	WB
	Japanese encephalitis virus prM antibody	GTX131833	Rb pAb	JEV	WB, ICC/IF
Lassa Virus	Lassa virus Glycoprotein G1 antibody [HL2536]	GTX638905	Rec Rb mAb	LASV	WB, ICC/IF
	Lassa virus Glycoprotein G2 antibody	GTX134872	Rb pAb	LASV	WB
	Lassa virus Glycoprotein G2 antibody	GTX134883	Rb pAb	LASV	WB, IHC-P
	Lassa virus Glycoprotein G2 antibody [HL4006]	GTX642337	Rec Rb mAb	LASV	WB, ICC/IF
	Lassa virus Glycoprotein G2 antibody [HL4882]	GTX644947	Rec Rb mAb	LASV	WB, ICC/IF
	Lassa virus Glycoprotein G2 antibody [HL4881]	GTX644946	Rec Rb mAb	LASV	WB
	Lassa virus Nucleoprotein antibody	GTX134873	Rb pAb	LASV	WB, IHC-P (cell pellet)
	Lassa virus Nucleoprotein antibody	GTX134884	Rb pAb	LASV	WB, in vitro
	Lassa virus Nucleoprotein antibody [HL1390]	GTX636830	Rec Rb mAb	LASV	WB
	Lassa virus Nucleoprotein antibody [HL1392]	GTX636832	Rec Rb mAb	LASV	WB, ICC/IF
	Lassa virus Nucleoprotein antibody [HL4044]	GTX642459	Rec Rb mAb	LASV	WB, ICC/IF
	Lassa virus RING finger protein Z antibody	GTX134874	Rb pAb	LASV	WB
	Lassa virus RING finger protein Z antibody	GTX134885	Rb pAb	LASV	WB
	Lassa virus RING finger protein Z antibody [HL5386]	GTX645954	Rec Rb mAb	LASV	WB, ICC/IF
	Lassa virus RING finger protein Z antibody [HL4687]	GTX644688	Rec Rb mAb	LASV	WB, ICC/IF
Lassa virus RING finger protein Z antibody [HL4801]	GTX644813	Rec Rb mAb	LASV	WB, ICC/IF	
MERS-CoV	MERS-CoV Envelope protein antibody	GTX135370	Rb pAb	MERS-CoV	WB
	MERS-CoV Envelope protein antibody	GTX135382	Rb pAb	MERS-CoV	WB, ICC/IF
	MERS-CoV M protein antibody	GTX134866	Rb pAb	MERS-CoV	WB
	MERS-CoV Nucleoprotein antibody	GTX134868	Rb pAb	MERS-CoV	WB, ELISA
	MERS-CoV ORF4a antibody	GTX134869	Rb pAb	MERS-CoV	WB



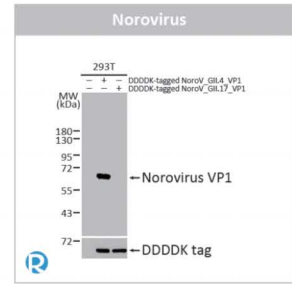
**Mpox virus A29L antibody [HL2527] (GTX638888)**



**Mpox virus A4L antibody [HL2555] (GTX638927)**

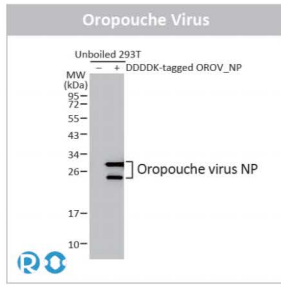


**Nipah virus Nucleoprotein antibody [HL1436] (GTX636902)**

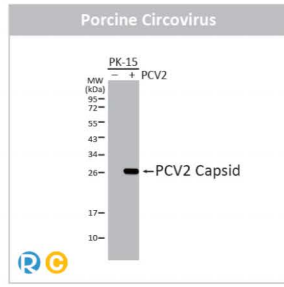


**Norovirus VP1 antibody [HL1672] (GTX637271)**

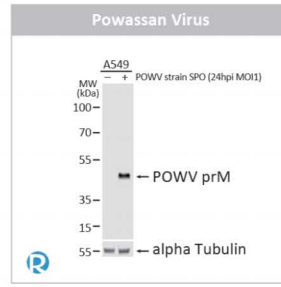
Virus	Product Name	Cat. No.	Clonality	Reactivity	Applications
MERS-CoV	MERS-CoV ORF4a antibody	GTX134880	Rb pAb	MERS-CoV	WB
	MERS-CoV ORF4a antibody [HL4583]	GTX644259	Rec Rb mAb	MERS-CoV	WB, ICC/IF
	MERS-CoV ORF4b antibody	GTX134870	Rb pAb	MERS-CoV	WB
	MERS-CoV Spike (S1) antibody	GTX134864	Rb pAb	MERS-CoV	WB
	MERS-CoV Spike (S1) antibody	GTX134875	Rb pAb	MERS-CoV	WB
	MERS-CoV Spike (S2) antibody	GTX135381	Rb pAb	MERS-CoV	WB
	MERS-CoV M protein antibody [HL4727]	GTX644731	Rec Rb mAb	MERS-CoV	WB, ICC/IF
	MERS-CoV Spike (S1) antibody [HL4654]	GTX644527	Rec Rb mAb	MERS-CoV	WB, ICC/IF
	MERS-CoV Spike (S2) antibody [HL5539]	GTX646213	Rec Rb mAb	MERS-CoV	WB
	MERS-CoV Spike (S2) antibody [HL5792]	GTX646863	Rec Rb mAb	MERS-CoV	WB
Monkeypox Virus	Mpox virus A4L antibody [HL2555]	GTX638927	Rec Rb mAb	MPXV, VACV	WB, ICC/IF
	Mpox virus A18R antibody [HL5616]	GTX646298	Rec Rb mAb	MPXV, VACV	WB
	Mpox virus A29L antibody [HL2527]	GTX638888	Rec Rb mAb	MPXV, VACV	WB, ICC/IF
	Mpox virus A35R antibody [HL5565]	GTX646239	Rec Rb mAb	MPXV, VACV	WB
	Mpox virus A35R antibody [HL5804]	GTX646875	Rec Rb mAb	MPXV, VACV	WB
	Mpox virus B6R antibody [HL3102]	GTX640548	Rec Rb mAb	MPXV, VACV	WB
	Mpox virus B6R antibody [HL3107]	GTX640553	Rec Rb mAb	MPXV, VACV	WB, ICC/IF
	Mpox virus D8L antibody [HL2950]	GTX640335	Rec Rb mAb	MPXV, VACV	WB
	Mpox virus E9L antibody [HL5618]	GTX646300	Rec Rb mAb	MPXV, VACV	WB
	Mpox virus F13L antibody [HL2637]	GTX639093	Rec Rb mAb	MPXV, VACV	WB, ICC/IF
	Mpox virus H3L antibody [HL5423]	GTX645991	Rec Rb mAb	MPXV, VACV	WB
	Mpox virus I7L antibody [HL5688]	GTX646497	Rec Rb mAb	MPXV, VACV	WB
	Nipah Virus	Nipah virus Nucleoprotein antibody [HL1436]	GTX636902	Rec Rb mAb	Nipah virus
Norovirus	Norovirus Capsid antibody [4901]	GTX36789	Ms mAb	Norovirus	ELISA, Sandwich ELISA
	Norovirus Capsid antibody [B113M]	GTX39879	Ms mAb	Norovirus	ELISA, Sandwich ELISA
	Norovirus VP1 antibody	GTX134380	Rb pAb	Norovirus	WB
	Norovirus VP1 antibody	GTX134381	Rb pAb	Norovirus	WB, IHC-P (cell pellet)
	Norovirus VP1 antibody	GTX134382	Rb pAb	Norovirus	WB
	Norovirus VP1 antibody [HL1672]	GTX637271	Rec Rb mAb	Norovirus	WB
	Norovirus VP1 antibody [HL2177]	GTX638181	Rec Rb mAb	Norovirus	WB, ICC/IF
	Norovirus VP1 antibody [HL2410]	GTX638627	Rec Rb mAb	Norovirus	WB
	Norovirus VP2 antibody	GTX134383	Rb pAb	Norovirus	WB
	Norovirus VP2 antibody	GTX134386	Rb pAb	Norovirus	WB
	Norovirus VP2 antibody [HL5226]	GTX645482	Rec Rb mAb	Norovirus	WB
	Norovirus VP2 antibody [HL4580]	GTX644256	Rec Rb mAb	Norovirus	WB, ICC/IF
	Norovirus VP2 antibody [HL4685]	GTX644686	Rec Rb mAb	Norovirus	WB, ICC/IF
Oropouche Virus	Oropouche virus Nucleoprotein antibody [HL5558]	GTX646232	Rec Rb mAb	Oropouche virus	WB
Porcine Circovirus	Porcine circovirus type 2 / PCV2 Capsid antibody	GTX128120	Rb pAb	PCV2	WB, IHC-P, IHC
	Porcine circovirus type 2 / PCV2 Capsid antibody	GTX128121	Rb pAb	PCV2	WB, IHC-P
	Porcine circovirus type 2 / PCV2 Capsid antibody [GT1641]	GTX634172	Ms mAb	PCV2	WB, ICC/IF
	Porcine circovirus type 2 / PCV2 Capsid antibody [GT863]	GTX634210	Ms mAb	PCV2	WB, IHC-P
	Porcine circovirus type 2 / PCV2 Capsid antibody [GT972]	GTX634211	Ms mAb	PCV2	WB, ICC/IF
	Porcine circovirus type 2 / PCV2 Capsid antibody [HL3443]	GTX641316	Rec Rb mAb	PCV2	WB
	Porcine circovirus type 2 / PCV2 Capsid antibody [HL3526]	GTX641423	Rec Rb mAb	PCV2	WB, ICC/IF
Porcine circovirus type 2 / PCV2 replicase antibody	GTX133638	Rb pAb	PCV2	WB, ICC/IF	
Porcine Reproductive and Respiratory Syndrome Virus	PRRS virus GP3 protein antibody	GTX129272	Rb pAb	PRRSV	WB
	PRRS virus GP3 protein antibody [HL3675]	GTX641703	Rec Rb mAb	PRRSV	WB, ICC/IF
	PRRS virus GP5 protein antibody	GTX129062	Rb pAb	PRRSV	WB, ICC/IF
	PRRS virus GP5 protein antibody [HL2872]	GTX640149	Rec Rb mAb	PRRSV	WB, ICC/IF
	PRRS virus M protein antibody	GTX129063	Rb pAb	PRRSV	WB, ICC/IF, IHC-P
	PRRS virus M protein antibody [HL2575]	GTX638953	Rec Rb mAb	PRRSV	WB
	PRRS virus M protein antibody [HL2619]	GTX639073	Rec Rb mAb	PRRSV	WB, IHC-P



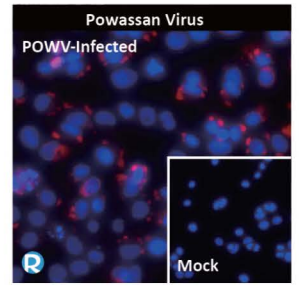
**Oropouche virus Nucleoprotein antibody [HL5558] (GTX646232)**



**Porcine Circovirus type 2 / PCV2 Capsid antibody [HL3443] (GTX641316)**

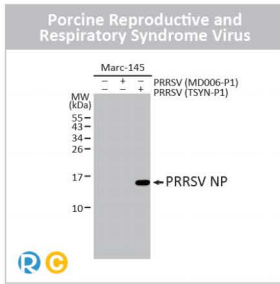


**Powassan virus prM protein antibody [HL4038] (GTX642369)**

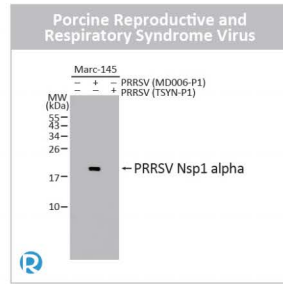


**Powassan virus NS4B antibody [HL4298] (GTX643538)**

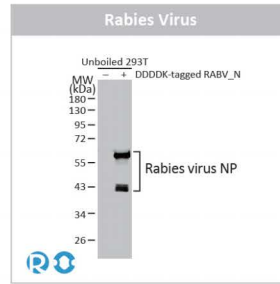
Virus	Product Name	Cat. No.	Clonality	Reactivity	Applications
Porcine Reproductive and Respiratory Syndrome Virus	<span style="color: orange;">C</span> VetSignal - PRRS virus M protein antibody [GT1911]	GTX634651	Ms mAb	PRRSV	WB
	<span style="color: orange;">C</span> PRRS virus Nsp1 alpha antibody	GTX133695	Rb pAb	PRRSV	WB
	<span style="color: blue;">R</span> PRRS virus Nsp1 alpha antibody [HL5078]	GTX645268	Rec Rb mAb	PRRSV	WB
	<span style="color: blue;">R</span> PRRS virus Nsp1 beta antibody [HL4979]	GTX645065	Rec Rb mAb	PRRSV	WB
	<span style="color: orange;">C</span> PRRS virus Nsp4 protein antibody	GTX133700	Rb pAb	PRRSV	WB
	<span style="color: blue;">R</span> PRRS virus Nsp4 protein antibody [HL4840]	GTX644903	Rec Rb mAb	PRRSV	WB, ICC/IF
	<span style="color: orange;">C</span> PRRS virus Nucleocapsid protein antibody	GTX129270	Rb pAb	PRRSV	WB, ICC/IF
	<span style="color: orange;">C</span> PRRS virus Nucleocapsid protein antibody	GTX135351	Rb pAb	PRRSV	WB, ICC/IF
	PRRS virus Nucleocapsid protein antibody	GTX135352	Rb pAb	PRRSV	WB, ICC/IF
	PRRS virus Nucleocapsid protein antibody	GTX135353	Rb pAb	PRRSV	WB, ICC/IF
	<span style="color: blue;">R</span> PRRS virus Nucleocapsid protein antibody [GT119]	GTX642224	Rec Ms mAb	PRRSV	WB, ICC/IF
	<span style="color: blue;">R</span> PRRS virus Nucleocapsid protein antibody [GT137]	GTX642450	Rec Ms mAb	PRRSV	WB
	<span style="color: blue;">R</span> <span style="color: orange;">C</span> PRRS virus Nucleocapsid protein antibody [HL1901]	GTX637650	Rec Rb mAb	PRRSV	WB, ICC/IF
	<span style="color: blue;">R</span> <span style="color: orange;">C</span> PRRS virus Nucleocapsid protein antibody [HL2046]	GTX637947	Rec Rb mAb	PRRSV	WB, ICC/IF
	<span style="color: blue;">R</span> <span style="color: orange;">C</span> PRRS virus Nucleocapsid protein antibody [HL4100]	GTX642546	Rec Rb mAb	PRRSV	WB, ICC/IF
	<span style="color: blue;">R</span> PRRS virus Nucleocapsid protein antibody [HL4256]	GTX643492	Rec Rb mAb	PRRSV	WB, ICC/IF
	<span style="color: blue;">R</span> PRRS virus Nucleocapsid protein antibody [HL4257]	GTX643493	Rec Rb mAb	PRRSV	WB, ICC/IF
	<span style="color: blue;">R</span> PRRS virus Nucleocapsid protein antibody [HL4690]	GTX644691	Rec Rb mAb	PRRSV	WB, ICC/IF
	<span style="color: blue;">R</span> PRRS virus Nucleocapsid protein antibody [HL4927]	GTX645000	Rec Rb mAb	PRRSV	WB, ICC/IF
	Powassan Virus	<span style="color: blue;">R</span> Powassan virus Capsid antibody [HL4301]	GTX643541	Rec Rb mAb	POWV
<span style="color: blue;">R</span> Powassan virus Capsid antibody [HL4303]		GTX643543	Rec Rb mAb	POWV	ICC/IF
<span style="color: blue;">R</span> Powassan virus Envelope antibody [HL2952]		GTX640337	Rec Rb mAb	POWV	WB, ICC/IF, IHC-Fr
<span style="color: blue;">R</span> Powassan virus Envelope antibody [HL2955]		GTX640340	Rec Rb mAb	POWV	WB, ICC/IF, IHC-Fr
<span style="color: blue;">R</span> Powassan virus Envelope antibody [HL2957]		GTX640342	Rec Rb mAb	POWV	WB, ICC/IF, IHC-Fr
<span style="color: blue;">R</span> Powassan virus NS1 antibody [HL3963]		GTX642213	Rec Rb mAb	POWV	WB, ICC/IF
<span style="color: blue;">R</span> Powassan virus NS2B antibody [HL4296]		GTX643536	Rec Rb mAb	POWV	ICC/IF
<span style="color: blue;">R</span> Powassan virus NS3 antibody [HL3967]		GTX642217	Rec Rb mAb	POWV	WB, ICC/IF
<span style="color: blue;">R</span> Powassan virus NS3 antibody [HL3968]		GTX642218	Rec Rb mAb	POWV	WB, ICC/IF
<span style="color: blue;">R</span> Powassan virus NS3 antibody [HL3969]		GTX642219	Rec Rb mAb	POWV	WB
<span style="color: blue;">R</span> Powassan virus NS4B antibody [HL4298]		GTX643538	Rec Rb mAb	POWV	ICC/IF
<span style="color: blue;">R</span> Powassan virus NS5 antibody [HL4165]		GTX642970	Rec Rb mAb	POWV	WB, ICC/IF
<span style="color: orange;">C</span> Powassan virus prM protein antibody		GTX132055	Rb pAb	POWV	WB
<span style="color: blue;">R</span> Powassan virus prM protein antibody [HL4038]		GTX642369	Rec Rb mAb	POWV	WB, ICC/IF
<span style="color: blue;">R</span> Powassan virus prM protein antibody [HL4037]		GTX642368	Rec Rb mAb	POWV	WB, ICC/IF
<span style="color: blue;">R</span> Powassan virus prM protein antibody [HL4039]	GTX642370	Rec Rb mAb	POWV	ICC/IF	
<span style="color: blue;">R</span> Powassan virus prM protein antibody [HL4163]	GTX642968	Rec Rb mAb	POWV	WB, ICC/IF	
Rabies Virus	<span style="color: blue;">R</span> Rabies virus Glycoprotein antibody [HL5746]	GTX646697	Rec Rb mAb	RABV	WB
	<span style="color: blue;">R</span> Rabies virus Matrix antibody [HL5925]	GTX647250	Rec Rb mAb	RABV	WB
	<span style="color: blue;">R</span> Rabies virus Nucleoprotein antibody [HL5560]	GTX646234	Rec Rb mAb	RABV	WB
	<span style="color: blue;">R</span> Rabies virus P antibody [HL5709]	GTX646540	Rec Rb mAb	RABV	WB
	<span style="color: blue;">R</span> Rabies virus P antibody [HL5710]	GTX646541	Rec Rb mAb	RABV	WB
Respiratory Syncytial Virus	<span style="color: orange;">C</span> Respiratory Syncytial virus antibody (FITC)	GTX36375	Goat pAb	RSV	ICC/IF, ELISA, Functional Assay, IHC, Neutralizing /Inhibition
	<span style="color: orange;">C</span> Respiratory Syncytial virus A2 G protein antibody	GTX70381	Rb pAb	RSV	WB, ELISA, IHC
	Respiratory Syncytial virus B1 G protein antibody	GTX70382	Rb pAb	RSV	WB, ELISA
	<span style="color: blue;">R</span> Respiratory Syncytial virus Fusion protein antibody [GT14]	GTX640819	Rec Ms mAb	RSV	ICC/IF
	<span style="color: blue;">R</span> Respiratory Syncytial virus Fusion protein antibody [GT19]	GTX640950	Rec Ms mAb	RSV	WB
	<span style="color: blue;">R</span> Respiratory Syncytial virus Fusion protein antibody [GT20]	GTX640951	Rec Ms mAb	RSV	WB
	<span style="color: blue;">R</span> Respiratory Syncytial Virus M protein Antibody [HL3000]	GTX640410	Rec Rb mAb	RSV	WB, ICC/IF
	<span style="color: blue;">R</span> <span style="color: orange;">C</span> Respiratory Syncytial virus NS1 antibody [HL2383]	GTX638591	Rec Rb mAb	RSV	WB, ICC/IF
	<span style="color: blue;">R</span> Respiratory Syncytial virus Nucleoprotein antibody [HL1245]	GTX636647	Rec Rb mAb	RSV	WB, ELISA, Sandwich ELISA
<span style="color: blue;">R</span> <span style="color: orange;">C</span> Respiratory Syncytial virus Nucleoprotein antibody [HL1246]	GTX636648	Rec Rb mAb	RSV	WB, ICC/IF, IP, ELISA, Lateral Flow, Sandwich ELISA	



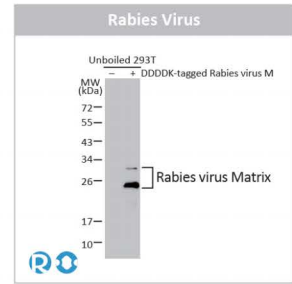
**PRRS virus Nucleocapsid protein antibody [HL4100] (GTX642546)**



**PRRS virus Nsp1 alpha antibody [HL5078] (GTX645268)**

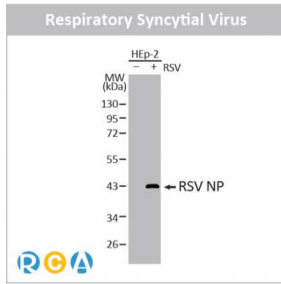


**Rabies virus Nucleoprotein antibody [HL5560] (GTX646234)**

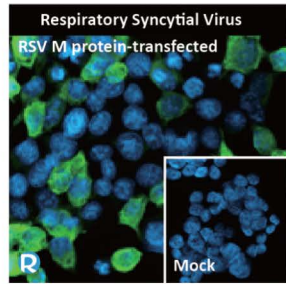


**Rabies virus Matrix antibody [HL5925] (GTX647250)**

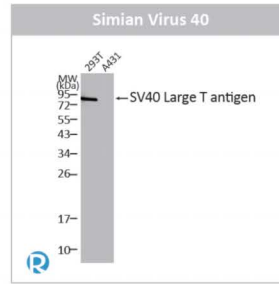
Virus	Product Name	Cat. No.	Clonality	Reactivity	Applications
Respiratory Syncytial Virus	Respiratory Syncytial virus Nucleoprotein antibody [HL1247]	GTX636649	Rec Rb mAb	RSV	WB, IP, ELISA, Lateral Flow, Sandwich ELISA
	Respiratory Syncytial virus Nucleoprotein antibody [HL1248]	GTX636650	Rec Rb mAb	RSV	WB, ICC/IF, IP, ELISA, Lateral Flow, Sandwich ELISA
	Respiratory Syncytial virus Nucleoprotein antibody [HL1291]	GTX636705	Rec Rb mAb	RSV	WB, ELISA, Sandwich ELISA
	Respiratory Syncytial virus Nucleoprotein antibody [HL1295]	GTX636709	Rec Rb mAb	RSV	WB, ICC/IF, ELISA, Sandwich ELISA
	Respiratory Syncytial virus Nucleoprotein antibody [HL1296]	GTX636710	Rec Rb mAb	RSV	WB, ICC/IF, ELISA, Sandwich ELISA
	Respiratory Syncytial virus Nucleoprotein antibody [HL2180]	GTX638184	Rec Rb mAb	RSV	Lateral Flow
	Respiratory Syncytial virus Nucleoprotein antibody [HL2182]	GTX638186	Rec Rb mAb	RSV	Lateral Flow
	Respiratory Syncytial virus type A G protein antibody [HL2354]	GTX638557	Rec Rb mAb	RSV type A	WB
	Respiratory Syncytial virus type A G protein antibody [HL2643]	GTX639099	Rec Rb mAb	RSV type A	WB
	Respiratory Syncytial virus type A G protein antibody [HL3122]	GTX640598	Rec Rb mAb	RSV type A	WB
	Respiratory Syncytial virus type A G protein antibody [HL5388]	GTX645956	Rec Rb mAb	RSV type A	WB
	Respiratory Syncytial virus type A Nucleoprotein antibody [HL1297]	GTX636711	Rec Rb mAb	RSV type A	WB, ICC/IF, IP, ELISA, Sandwich ELISA
Respiratory Syncytial virus type B G protein antibody [HL1733]	GTX637381	Rec Rb mAb	RSV type B	WB, ICC/IF, IHC-P (cell pellet)	
SARS-CoV-2 (COVID-19)	SARS-CoV-2 (COVID-19) 3CLpro (nsp5) antibody	GTX135470	Rb pAb	SARS-CoV-2	WB
	SARS-CoV-2 (COVID-19) 3CLpro (nsp5) antibody [HL1367]	GTX636807	Rec Rb mAb	SARS-CoV-2	WB, ICC/IF
	SARS-CoV-2 (COVID-19) Envelope antibody	GTX136046	Rb pAb	SARS-CoV-2	WB, IHC-P
	SARS-CoV-2 (COVID-19) Envelope antibody [HL1443]	GTX636915	Rec Rb mAb	SARS-CoV-2	WB, ICC/IF, IHC-P
	SARS-CoV-2 (COVID-19) Membrane antibody [HL1087]	GTX636245	Rec Rb mAb	SARS-CoV-2	WB, ICC/IF
	SARS-CoV-2 (COVID-19) Membrane antibody [HL1088]	GTX636246	Rec Rb mAb	SARS-CoV-2	WB, ICC/IF, IHC-P
	SARS-CoV-2 (COVID-19) nsp1 antibody	GTX135612	Rb pAb	SARS-CoV-2	WB, ICC/IF, IHC-P (cell pellet)
	SARS-CoV-2 (COVID-19) nsp1 antibody [HL1435]	GTX636901	Rec Rb mAb	SARS-CoV-2	WB, ICC/IF, IHC-P (cell pellet)
	SARS-CoV-2 (COVID-19) nsp2 antibody	GTX135717	Rb pAb	SARS-CoV-2	WB, ICC/IF
	SARS-CoV-2 (COVID-19) nsp2 antibody [HL1371]	GTX636811	Rec Rb mAb	SARS-CoV-2	WB, ICC/IF
	SARS-CoV-2 (COVID-19) nsp3 / PL-pro antibody	GTX135796	Rb pAb	SARS-CoV-2	WB
	SARS-CoV-2 (COVID-19) nsp3 / PL-pro antibody [HL2350]	GTX638553	Rec Rb mAb	SARS-CoV-2	WB, ICC/IF
	SARS-CoV-2 (COVID-19) nsp3 / PL-pro antibody [HL2709]	GTX639463	Rec Rb mAb	SARS-CoV-2	WB, ICC/IF
	SARS-CoV-2 (COVID-19) nsp3 antibody	GTX135589	Rb pAb	SARS-CoV-2	WB, ICC/IF, IHC-P (cell pellet)
	SARS-CoV-2 (COVID-19) nsp7 antibody [HL1301]	GTX636719	Rec Rb mAb	SARS-CoV-2	WB, ICC/IF, IHC-P (cell pellet)
	SARS-CoV-2 (COVID-19) nsp8 antibody [HL1523]	GTX636997	Rec Rb mAb	SARS-CoV-2	WB, ICC/IF, IHC-P (cell pellet)
	SARS-CoV / SARS-CoV-2 (COVID-19) nsp8 antibody [5A10]	GTX632696	Ms mAb	SARS-CoV, SARS-CoV-2	WB, ICC/IF, IHC-Fr, FCM
	SARS-CoV-2 (COVID-19) nsp9 antibody	GTX135732	Rb pAb	SARS-CoV-2	WB, ICC/IF, IP, PLA, IHC-P (cell pellet)
	SARS-CoV-2 (COVID-19) nsp9 antibody [HL1399]	GTX636839	Rec Rb mAb	SARS-CoV-2	WB, ICC/IF, IHC-P (cell pellet)
	SARS-CoV-2 (COVID-19) nsp10 antibody [HL1379]	GTX636819	Rec Rb mAb	SARS-CoV-2	WB, ICC/IF
	SARS-CoV-2 (COVID-19) nsp10 antibody [HL1381]	GTX636821	Rec Rb mAb	SARS-CoV-2	WB, ICC/IF
	SARS-CoV-2 (COVID-19) nsp11 antibody [HL2388]	GTX638597	Rec Rb mAb	SARS-CoV-2	WB, ICC/IF
	SARS-CoV-2 (COVID-19) nsp12 / RdRP antibody [HL1444]	GTX636916	Rec Rb mAb	SARS-CoV-2	WB, ICC/IF, IHC-P (cell pellet)
	SARS-CoV-2 (COVID-19) nsp12 / RdRP antibody [HL2221]	GTX638225	Rec Rb mAb	SARS-CoV-2	WB, ICC/IF
	SARS-CoV-2 (COVID-19) nsp12 antibody	GTX135467	Rb pAb	SARS-CoV-2	WB, IHC-P
	SARS-CoV-2 (COVID-19) nsp12 antibody [HL1415]	GTX636881	Rec Rb mAb	SARS-CoV-2	WB, ICC/IF, IHC-P (cell pellet)
	SARS-CoV-2 (COVID-19) nsp14 antibody [HL2539]	GTX638908	Rec Rb mAb	SARS-CoV-2	WB, ICC/IF
	SARS-CoV-2 (COVID-19) nsp14 antibody [HL2577]	GTX638955	Rec Rb mAb	SARS-CoV-2	ICC/IF
	SARS-CoV-2 (COVID-19) nsp14 antibody [HL2578]	GTX638956	Rec Rb mAb	SARS-CoV-2	WB, ICC/IF
	SARS-CoV-2 (COVID-19) nsp15 antibody [HL1445]	GTX636917	Rec Rb mAb	SARS-CoV-2	WB, ICC/IF, IHC-P (cell pellet)
	SARS-CoV-2 (COVID-19) nsp15 antibody [HL1446]	GTX636918	Rec Rb mAb	SARS-CoV-2	WB, ICC/IF, IHC-P (cell pellet)
	SARS-CoV-2 (COVID-19) nsp15 antibody [HL1760]	GTX637410	Rec Rb mAb	SARS-CoV-2	WB, ICC/IF
	SARS-CoV-2 (COVID-19) nsp16 antibody [HL1945]	GTX637782	Rec Rb mAb	SARS-CoV-2	WB, ICC/IF
SARS-CoV-2 (COVID-19) Nucleocapsid antibody [HL146]	GTX635680	Rec Rb mAb	SARS-CoV, SARS-CoV-2	WB, ICC/IF, FCM, ELISA, Sandwich ELISA	
SARS-CoV-2 (COVID-19) Nucleocapsid antibody [HL249]	GTX635678	Rec Rb mAb	SARS-CoV, SARS-CoV-2	WB, ICC/IF, ELISA, Sandwich ELISA, IHC-P (cell pellet)	
SARS-CoV-2 (COVID-19) Nucleocapsid antibody [HL344]	GTX635679	Rec Rb mAb	SARS-CoV-2	WB, ICC/IF, IHC-P, IHC-Fr, ELISA, Sandwich ELISA, IHC-P (cell pellet)	
SARS-CoV-2 (COVID-19) Nucleocapsid antibody [HL448]	GTX635686	Rec Rb mAb	SARS-CoV, SARS-CoV-2	WB, ICC/IF, IHC-P, ELISA, Lateral Flow, Sandwich ELISA, IHC-P (cell pellet)	
SARS-CoV-2 (COVID-19) Nucleocapsid antibody [HL453]	GTX635687	Rec Rb mAb	SARS-CoV, SARS-CoV-2	WB, ICC/IF, ELISA, IHC-P (cell pellet)	



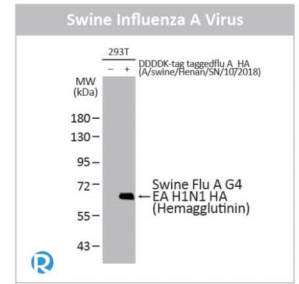
**Respiratory Syncytial Virus Nucleoprotein antibody [HL1246] (GTX636648)**



**Respiratory Syncytial Virus M protein antibody [HL3000] (GTX640410)**

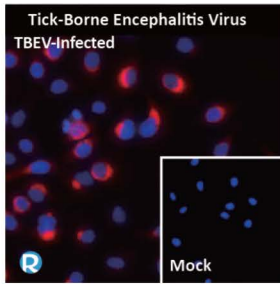


**SV40 Large T-antigen antibody [HL5010] (GTX645103)**

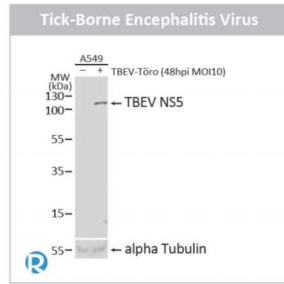


**Swine Influenza A virus G4 EA H1N1 HA (Hemagglutinin) antibody [HL1343] (GTX636763)**

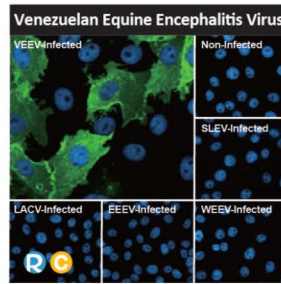
Virus	Product Name	Cat. No.	Clonality	Reactivity	Applications
SARS-CoV-2 (COVID-19)	<span style="color: blue;">R</span> <span style="color: orange;">C</span> SARS-CoV-2 (COVID-19) Nucleocapsid antibody [HL455]	GTX635688	Rec Rb mAb	SARS-CoV, SARS-CoV-2	WB, ICC/IF, ELISA, Lateral Flow, Sandwich ELISA, IHC-P (cell pellet)
	<span style="color: blue;">R</span> <span style="color: orange;">C</span> SARS-CoV-2 (COVID-19) Nucleocapsid antibody [HL455-MS]	GTX635712	Rec Ms mAb	SARS-CoV, SARS-CoV-2	WB, ICC/IF, IHC-P, ELISA, Sandwich ELISA, IHC-P (cell pellet)
	<span style="color: blue;">R</span> <span style="color: orange;">C</span> SARS-CoV-2 (COVID-19) Nucleocapsid antibody [HL5410]	GTX635685	Rec Rb mAb	SARS-CoV, SARS-CoV-2	WB, ICC/IF, ELISA, Lateral Flow, Sandwich ELISA, IHC-P (cell pellet)
	<span style="color: blue;">R</span> <span style="color: orange;">C</span> SARS-CoV-2 (COVID-19) Nucleocapsid antibody [HL5511]	GTX635689	Rec Rb mAb	SARS-CoV, SARS-CoV-2	WB, ICC/IF, IHC-P, IHC-Fr, ELISA, Lateral Flow, Sandwich ELISA, IHC-P (cell pellet)
	<span style="color: orange;">C</span> SARS-CoV / SARS-CoV-2 (COVID-19) Nucleocapsid antibody [6H3]	GTX632269	Ms mAb	SARS-CoV, SARS-CoV-2	WB, ICC/IF, IHC-P, IHC-Fr, IP, ELISA, Sandwich ELISA, IHC-P (cell pellet)
	<span style="color: blue;">R</span> SARS-CoV-2 (COVID-19) ORF3a antibody [HL1722]	GTX637321	Rec Rb mAb	SARS-CoV-2	WB, ICC/IF, IHC-P (cell pellet)
	<span style="color: orange;">C</span> SARS-CoV / SARS-CoV-2 (COVID-19) ORF7a antibody [3C9]	GTX632602	Ms mAb	SARS-CoV, SARS-CoV-2	WB, ICC/IF
	<span style="color: blue;">R</span> SARS-CoV-2 (COVID-19) ORF7b antibody [HL1453]	GTX636925	Rec Rb mAb	SARS-CoV-2	WB, ICC/IF, IHC-P (cell pellet)
	<span style="color: orange;">C</span> SARS-CoV-2 (COVID-19) ORF8 antibody	GTX135591	Rb pAb	SARS-CoV-2	WB, ICC/IF, ELISA, IHC-P (cell pellet)
	<span style="color: blue;">R</span> SARS-CoV-2 (COVID-19) ORF9b antibody [HL1917]	GTX637666	Rec Rb mAb	SARS-CoV-2	WB, ICC/IF
	<span style="color: blue;">R</span> SARS-CoV-2 (COVID-19) ORF9b antibody [HL1918]	GTX637667	Rec Rb mAb	SARS-CoV-2	WB, ICC/IF
	<span style="color: orange;">C</span> SARS-CoV-2 (COVID-19) Spike antibody	GTX135356	Rb pAb	SARS-CoV-2	WB, ICC/IF, IHC-P, FCM, ELISA, Sandwich ELISA, IHC-P (cell pellet)
	<span style="color: blue;">R</span> <span style="color: orange;">C</span> <span style="color: blue;">A</span> SARS-CoV / SARS-CoV-2 (COVID-19) spike antibody [1A9]	GTX632604	Ms mAb	SARS-CoV, SARS-CoV-2	WB, ICC/IF, IHC-P, IHC-Fr, FCM, IP, ELISA, EM, Sandwich ELISA, IHC-P (cell pellet)
	<span style="color: blue;">R</span> SARS-CoV Spike (SΔ3) antibody [7G12]	GTX632603	Ms mAb	SARS-CoV	WB, IP
	<span style="color: blue;">R</span> SARS-CoV-2 (COVID-19) Spike (A222V Mutant) antibody	GTX135960	Rb pAb	SARS-CoV-2	WB
	<span style="color: blue;">R</span> SARS-CoV-2 (COVID-19) Spike (N439K Mutant) antibody	GTX135961	Rb pAb	SARS-CoV-2	WB
	<span style="color: blue;">R</span> SARS-CoV-2 (COVID-19) Spike (N501Y Mutant) antibody [HL1425]	GTX636891	Rec Rb mAb	SARS-CoV-2	WB
	<span style="color: blue;">R</span> <span style="color: orange;">C</span> SARS-CoV-2 (COVID-19) Spike RBD antibody [HL1002]	GTX635791	Rec Rb mAb	SARS-CoV-2	ELISA, Neutralizing /Inhibition, Sandwich ELISA
	<span style="color: blue;">R</span> <span style="color: orange;">C</span> SARS-CoV-2 (COVID-19) Spike RBD antibody [HL1003]	GTX635792	Rec Rb mAb	SARS-CoV-2	ICC/IF, ELISA, Neutralizing /Inhibition, Sandwich ELISA
	<span style="color: blue;">R</span> <span style="color: orange;">C</span> SARS-CoV-2 (COVID-19) Spike RBD antibody [HL1003-HU]	GTX635866	Rec Hu mAb	SARS-CoV-2	ELISA, Neutralizing /Inhibition, Sandwich ELISA
	<span style="color: blue;">R</span> <span style="color: orange;">C</span> SARS-CoV-2 (COVID-19) Spike RBD antibody [HL1004]	GTX635793	Rec Rb mAb	SARS-CoV-2	ICC/IF, ELISA, Neutralizing /Inhibition, Sandwich ELISA
	<span style="color: blue;">R</span> <span style="color: orange;">C</span> SARS-CoV-2 (COVID-19) Spike RBD antibody [HL1014]	GTX635807	Rec Rb mAb	SARS-CoV-2	ICC/IF, ELISA, Sandwich ELISA
	<span style="color: blue;">R</span> <span style="color: orange;">C</span> SARS-CoV-2 (COVID-19) Spike RBD antibody [HL257]	GTX635692	Rec Rb mAb	SARS-CoV-2	WB, ICC/IF, IHC-P, ELISA, IHC-P (cell pellet)
	<span style="color: blue;">R</span> SARS-CoV-2 (COVID-19) Spike RBD Omicron antibody [HL1866]	GTX637591	Rec Rb mAb	SARS-CoV-2	ICC/IF, ELISA, Neutralizing /Inhibition, Sandwich ELISA
	<span style="color: blue;">R</span> <span style="color: orange;">C</span> SARS-CoV-2 (COVID-19) Spike RBD Omicron antibody [HL1867]	GTX637592	Rec Rb mAb	SARS-CoV-2	ICC/IF, ELISA, Neutralizing /Inhibition, Sandwich ELISA
	<span style="color: blue;">R</span> <span style="color: orange;">C</span> SARS-CoV-2 (COVID-19) Spike S1 antibody [HL1]	GTX635656	Rec Rb mAb	SARS-CoV-2	WB, ICC/IF, IP, ELISA, Sandwich ELISA
	<span style="color: blue;">R</span> <span style="color: orange;">C</span> SARS-CoV-2 (COVID-19) Spike S1 antibody [HL134]	GTX635671	Rec Rb mAb	SARS-CoV-2	WB, ICC/IF, IHC-P, ELISA, IHC-P (cell pellet)
	<span style="color: blue;">R</span> SARS-CoV-2 (COVID-19) Spike S1 antibody [HL13402]	GTX635713	Rec Rb mAb	SARS-CoV-2	WB, ICC/IF, ELISA, Sandwich ELISA
<span style="color: blue;">R</span> <span style="color: orange;">C</span> SARS-CoV-2 (COVID-19) Spike S1 antibody [HL263]	GTX635672	Rec Rb mAb	SARS-CoV-2	WB, ICC/IF, FCM, ELISA, Sandwich ELISA, IHC-P (cell pellet)	
<span style="color: blue;">R</span> <span style="color: orange;">C</span> SARS-CoV-2 (COVID-19) Spike S1 antibody [HL6]	GTX635654	Rec Rb mAb	SARS-CoV-2	WB, ICC/IF, IHC-P, FCM, IP, ELISA, Sandwich ELISA, IHC-P (cell pellet)	
<span style="color: orange;">C</span> SARS-CoV-2 (COVID-19) Spike S2 / S2' antibody	GTX135386	Rb pAb	SARS-CoV-2	WB, ICC/IF, ELISA, Sandwich ELISA	
<span style="color: blue;">R</span> SARS-CoV-2 (COVID-19) Spike S2 / S2' antibody [HL1039]	GTX635911	Rec Rb mAb	SARS-CoV-2	WB, ICC/IF, ELISA, Sandwich ELISA, IHC-P (cell pellet)	
<span style="color: blue;">R</span> SARS-CoV-2 (COVID-19) Spike S2 antibody [GT745]	GTX636037	Ms mAb	SARS-CoV-2	WB, ELISA, Sandwich ELISA, IHC-P (cell pellet)	
<span style="color: blue;">R</span> <span style="color: orange;">C</span> SARS-CoV-2 (COVID-19) Spike S2 antibody [HL1038]	GTX635910	Rec Rb mAb	SARS-CoV-2	WB, ICC/IF, ELISA, Sandwich ELISA, IHC-P (cell pellet)	
<span style="color: blue;">R</span> <span style="color: orange;">C</span> SARS-CoV-2 (COVID-19) Spike S2 antibody [HL237]	GTX635693	Rec Rb mAb	SARS-CoV-2	WB, ICC/IF, ELISA, Sandwich ELISA, IHC-P (cell pellet)	
Simian Virus 40	<span style="color: orange;">C</span> SV40 Large T-antigen antibody	GTX134377	Rb pAb	SV40	WB
	<span style="color: orange;">C</span> SV40 T-antigen antibody	GTX134378	Rb pAb	SV40	WB, ICC/IF
	<span style="color: blue;">R</span> SV40 T-antigen antibody [HL5013]	GTX645106	Rec Rb mAb	SV40	WB, ICC/IF
	<span style="color: blue;">R</span> SV40 Large T-antigen antibody [HL5010]	GTX645103	Rec Rb mAb	SV40	WB, ICC/IF
Swine Influenza A Virus	Swine Influenza A virus G4 EA H1N1 HA (Hemagglutinin) antibody	GTX135762	Rb pAb	SIV	WB
	<span style="color: blue;">R</span> Swine Influenza A virus G4 EA H1N1 HA (Hemagglutinin) antibody [HL1342]	GTX636762	Rec Rb mAb	SIV	WB, ICC/IF, IHC-P (cell pellet)
	<span style="color: blue;">R</span> Swine Influenza A virus G4 EA H1N1 HA (Hemagglutinin) antibody [HL1343]	GTX636763	Rec Rb mAb	SIV	WB, ICC/IF, IHC-P (cell pellet)
	Swine Influenza A virus H1N1 HA (Hemagglutinin) antibody	GTX20084	Rb pAb	SIV	WB, ELISA
Tick-borne Encephalitis Virus	<span style="color: blue;">R</span> Tick-borne encephalitis virus (TBEV) Capsid antibody [HL4289]	GTX643529	Rec Rb mAb	TBEV	WB, ICC/IF
	<span style="color: blue;">R</span> Tick-borne encephalitis virus (TBEV) Envelope antibody [HL4031]	GTX642362	Rec Rb mAb	TBEV	WB, ICC/IF
	<span style="color: blue;">R</span> Tick-borne encephalitis virus (TBEV) Envelope antibody [HL4034]	GTX642365	Rec Rb mAb	TBEV	WB, ICC/IF
	<span style="color: blue;">R</span> Tick-borne encephalitis virus (TBEV) Envelope antibody [HL4030]	GTX642361	Rec Rb mAb	TBEV	WB, ICC/IF
	<span style="color: blue;">R</span> Tick-borne encephalitis virus (TBEV) Envelope antibody [HL4033]	GTX642364	Rec Rb mAb	TBEV	WB, ICC/IF



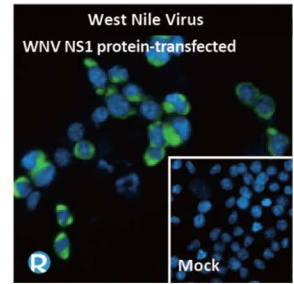
**Tick-borne encephalitis virus (TBEV) Envelope antibody [HL4030] (GTX642361)**



**Tick-borne encephalitis virus NS5 antibody [HL4061] (GTX642476)**

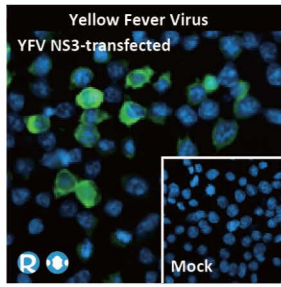


**Venezuelan Equine Encephalitis Virus nsP1 antibody [HL1472] (GTX636946)**

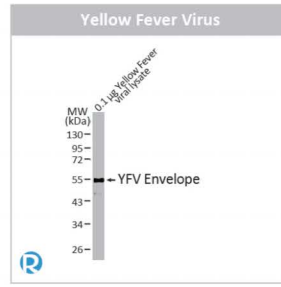


**West Nile virus NS1 protein antibody [GT79] (GTX641884)**

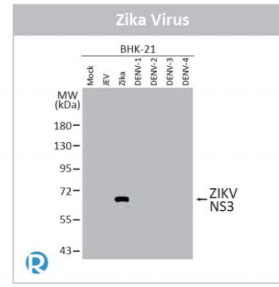
Viruses	Product Name	Cat. No.	Clonality	Reactivity	Applications
Tick-Borne Encephalitis Virus	Tick-borne encephalitis virus (TBEV) NS1 antibody [HL3904]	GTX642145	Rec Rb mAb	TBEV	WB, ICC/IF
	Tick-borne encephalitis virus (TBEV) NS1 antibody [HL3903]	GTX642144	Rec Rb mAb	TBEV	WB, ICC/IF
	Tick-borne encephalitis virus (TBEV) NS2B antibody [HL4147]	GTX642952	Rec Rb mAb	TBEV	WB, ICC/IF
	Tick-borne encephalitis virus (TBEV) NS2B antibody [HL4149]	GTX642954	Rec Rb mAb	TBEV	WB, ICC/IF
	Tick-borne encephalitis virus (TBEV) NS3 antibody [HL4154]	GTX642959	Rec Rb mAb	TBEV	WB, ICC/IF
	Tick-borne encephalitis virus (TBEV) NS3 antibody [HL4153]	GTX642958	Rec Rb mAb	TBEV	WB, ICC/IF
	Tick-borne encephalitis virus (TBEV) NS4A antibody [HL4155]	GTX642960	Rec Rb mAb	TBEV	WB, ICC/IF
	Tick-borne encephalitis virus (TBEV) NS5 antibody [HL4061]	GTX642476	Rec Rb mAb	TBEV	WB
	Tick-borne encephalitis virus (TBEV) NS5 antibody [HL4062]	GTX642477	Rec Rb mAb	TBEV	WB, ICC/IF
Tick-borne encephalitis virus (TBEV) prM protein antibody [HL4295]	GTX643535	Rec Rb mAb	TBEV	WB, ICC/IF	
Venezuelan Equine Encephalitis Virus	Venezuelan Equine Encephalitis Virus nsP1 antibody [HL1472]	GTX636946	Rec Rb mAb	VEEV	WB, ICC/IF, IHC-P (cell pellet)
	Venezuelan Equine Encephalitis Virus nsP1 antibody [HL1593]	GTX637072	Rec Rb mAb	VEEV	WB, IHC-P (cell pellet)
	Venezuelan Equine Encephalitis Virus nsP2 antibody [HL1919]	GTX637668	Rec Rb mAb	VEEV	WB, ICC/IF
	Venezuelan Equine Encephalitis Virus nsP3 antibody [HL1502]	GTX636976	Rec Rb mAb	VEEV	WB, ICC/IF, IHC-P (cell pellet)
	Venezuelan Equine Encephalitis Virus nsP3 antibody [HL1504]	GTX636978	Rec Rb mAb	VEEV	WB
	Venezuelan Equine Encephalitis Virus nsP4 antibody [HL1741]	GTX637389	Rec Rb mAb	VEEV	WB, ICC/IF
	Venezuelan Equine Encephalitis Virus nsP4 antibody [HL1741-MS]	GTX646336	Rec Ms mAb	VEEV	WB
West Nile Virus	West Nile virus Capsid protein antibody	GTX131947	Rb pAb	WNV	WB
	West Nile virus Capsid protein antibody [HL5124]	GTX645320	Rec Rb mAb	WNV	WB
	West Nile virus Envelope antibody	GTX132052	Rb pAb	WNV	WB
	West Nile virus Envelope antibody [GT3029]	GTX633919	Ms mAb	WNV	WB, ICC/IF
	West Nile virus Envelope antibody [HL4963]	GTX645049	Rec Rb mAb	WNV	WB
	West Nile virus Matrix antibody	GTX85512	Rb pAb	WNV	ELISA
	West Nile virus NS1 protein antibody	GTX132053	Rb pAb	WNV	WB
	West Nile virus NS1 protein antibody [GT79]	GTX641884	Rec Ms mAb	WNV	ICC/IF
	West Nile virus NS1 protein antibody [HL4644]	GTX644517	Rec Rb mAb	WNV	WB, ICC/IF
	West Nile virus NS2B protein antibody	GTX132060	Rb pAb	WNV	WB, ICC/IF
	West Nile virus NS3 protein antibody	GTX131955	Rb pAb	WNV	WB, ICC/IF
	West Nile virus NS3 protein antibody [HL4682]	GTX644683	Rec Rb mAb	WNV	WB, ICC/IF
	West Nile virus NS4A protein antibody	GTX131957	Rb pAb	WNV	WB
	West Nile virus NS5 protein antibody	GTX131961	Rb pAb	WNV	WB, IHC-P
	West Nile virus prM protein antibody	GTX131948	Rb pAb	WNV	WB
	West Nile virus prM protein antibody [HL3351]	GTX641128	Rec Rb mAb	WNV	WB, ICC/IF
	West Nile virus prM protein antibody [HL3500]	GTX641388	Rec Rb mAb	WNV	WB
Yellow Fever Virus	Yellow Fever virus Capsid Protein C antibody	GTX134022	Rb pAb	YFV	WB, ICC/IF
	Yellow Fever virus Envelope Protein antibody	GTX134024	Rb pAb	YFV	WB
	Yellow Fever virus Envelope Protein antibody [HL2409]	GTX638626	Rec Rb mAb	YFV	WB
	Yellow Fever virus Envelope Protein antibody [HL2730]	GTX639558	Rec Rb mAb	YFV	WB, IHC-P
	Yellow Fever virus NS1 Protein antibody	GTX134025	Rb pAb	YFV	WB, ICC/IF
	Yellow Fever virus NS1 Protein antibody	GTX134026	Rb pAb	YFV	WB
	Yellow Fever virus NS1 Protein antibody [HL4344]	GTX643594	Rec Rb mAb	YFV	WB
	Yellow Fever virus NS1 Protein antibody [HL4923]	GTX644996	Rec Rb mAb	YFV	WB, ICC/IF
	Yellow Fever virus NS2B Protein antibody	GTX134028	Rb pAb	YFV	WB, ICC/IF
	Yellow Fever virus NS2B Protein antibody [HL5337]	GTX645815	Rec Rb mAb	YFV	WB
	Yellow Fever virus NS3 Protein antibody	GTX133958	Rb pAb	YFV	WB
	Yellow Fever virus NS3 protein antibody	GTX133959	Rb pAb	YFV	WB, ICC/IF
	Yellow Fever virus NS3 protein antibody [HL3702]	GTX641874	Rec Rb mAb	YFV	WB, ICC/IF
	Yellow Fever virus NS3 protein antibody [GT344]	GTX645756	Rec Ms mAb	YFV	WB
	Yellow Fever virus NS3 protein antibody [GT341]	GTX645370	Rec Ms mAb	YFV	WB
	Yellow Fever virus NS4B Protein antibody	GTX134030	Rb pAb	YFV	WB, ICC/IF
	Yellow Fever virus NS4B Protein antibody [HL2449]	GTX638767	Rec Rb mAb	YFV	WB, ICC/IF
	Yellow Fever virus NS5 protein antibody	GTX134141	Rb pAb	YFV	WB, ICC/IF
	Yellow Fever virus NS5 protein antibody [HL2916]	GTX640259	Rec Rb mAb	YFV	WB
Yellow Fever virus NS5 protein antibody [HL3014]	GTX640427	Rec Rb mAb	YFV	WB	
Yellow Fever virus prM Protein antibody	GTX133957	Rb pAb	YFV	WB	
Yellow Fever virus prM Protein antibody [HL4004]	GTX642335	Rec Rb mAb	YFV	WB	



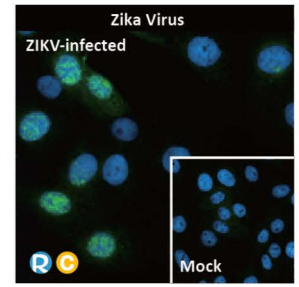
**Yellow Fever virus NS3 protein antibody [HL3702] (GTX641874)**



**Yellow Fever virus Envelope Protein antibody [HL2730] (GTX639558)**



**Zika virus NS3 protein antibody [HL4975] (GTX645061)**



**Zika virus NS5 protein antibody [HL2154] (GTX638132)**

Virus	Product Name	Cat. No.	Clonality	Reactivity	Applications
Yellow Fever Virus	Yellow Fever virus prM Protein antibody [GT299]	GTX645025	Rec Ms mAb	YFV	WB
	Yellow Fever virus prM Protein antibody [HL4709]	GTX644710	Rec Rb mAb	YFV	WB, ICC/IF
Zika Virus	Zika virus Capsid protein antibody	GTX133317	Rb pAb	ZIKV	WB, ICC/IF, IHC-P (cell pellet)
	Zika virus Capsid protein antibody	GTX134186	Rb pAb	ZIKV	WB, ICC/IF
	Zika virus Envelope protein antibody	GTX133314	Rb pAb	ZIKV	WB, ICC/IF, IHC-P
	Zika virus Envelope protein antibody	GTX133325	Rb pAb	ZIKV	WB, ICC/IF, ELISA, Sandwich ELISA
	Zika virus Envelope protein antibody	GTX133326	Rb pAb	ZIKV	WB, ICC/IF, ELISA, Sandwich ELISA
	Zika virus Envelope protein antibody [GT363]	GTX634155	Ms mAb	ZIKV	WB, ICC/IF, ELISA, IHC, Sandwich ELISA
	Zika virus Envelope protein antibody [GT871]	GTX634157	Ms mAb	ZIKV	WB, ICC/IF, ELISA, Sandwich ELISA
	Zika virus Envelope protein antibody [HL1699]	GTX637298	Rec Rb mAb	ZIKV	WB, ICC/IF, ELISA, Sandwich ELISA
	Zika virus Envelope protein antibody [GT314]	GTX645189	Rec Ms mAb	ZIKV	WB, ELISA, Sandwich ELISA
	Zika virus Envelope protein antibody [HL5279]	GTX645717	Rec Rb mAb	ZIKV	WB
	Zika virus NS1 protein antibody	GTX133306	Rb pAb	ZIKV	WB, ICC/IF, ELISA, Sandwich ELISA
	Zika virus NS1 protein antibody	GTX133307	Rb pAb	ZIKV	WB, ICC/IF, ELISA, Sandwich ELISA
	Zika virus NS1 protein antibody	GTX133323	Rb pAb	ZIKV	WB, ICC/IF, ELISA, Sandwich ELISA
	Zika virus NS1 protein antibody [GT281]	GTX634159	Ms mAb	ZIKV	WB, ICC/IF, IHC-P, IHC-P (cell pellet)
	Zika virus NS1 protein antibody [GT5212]	GTX634158	Ms mAb	ZIKV	WB, ICC/IF, ELISA, Sandwich ELISA
	Zika virus NS1 protein antibody [HL2567]	GTX638945	Rec Rb mAb	ZIKV	WB
	Zika virus NS1 protein antibody [HL4920]	GTX644993	Rec Rb mAb	ZIKV	WB, ICC/IF
	Zika virus NS2B protein antibody	GTX133308	Rb pAb	ZIKV	WB, ICC/IF, IHC-P, IHC-Fr, IHC-P (cell pellet)
	Zika virus NS2B protein antibody	GTX133318	Rb pAb	ZIKV	WB, ICC/IF
	Zika virus NS2B protein antibody [HL2151]	GTX638129	Rec Rb mAb	ZIKV	WB, ICC/IF
	Zika virus NS2B protein antibody [HL5585]	GTX646267	Rec Rb mAb	ZIKV	WB
	Zika virus NS3 protein antibody	GTX133309	Rb pAb	ZIKV	WB, ICC/IF, IHC-P
	Zika virus NS3 protein antibody	GTX133320	Rb pAb	ZIKV	WB, ICC/IF
	Zika virus NS3 protein antibody [HL4878]	GTX644943	Rec Rb mAb	ZIKV	WB, ICC/IF
	Zika virus NS3 protein antibody [HL4975]	GTX645061	Rec Rb mAb	ZIKV	WB, ICC/IF
	Zika virus NS3 protein antibody [GT285]	GTX644976	Rec Ms mAb	ZIKV	WB
	Zika virus NS4A protein antibody	GTX133704	Rb pAb	ZIKV	WB, ICC/IF
	Zika virus NS4B protein antibody	GTX133311	Rb pAb	ZIKV	WB, ICC/IF, IHC-Fr, FCM
	Zika virus NS4B protein antibody	GTX133321	Rb pAb	ZIKV	WB, ICC/IF, IHC-P (cell pellet)
	Zika virus NS4B protein antibody [HL1663]	GTX637261	Rec Rb mAb	ZIKV	WB, ICC/IF, IHC-P (cell pellet)
	Zika virus NS4B protein antibody [HL1664]	GTX637262	Rec Rb mAb	ZIKV	WB, ICC/IF, IHC-P (cell pellet)
	Zika virus NS5 protein antibody	GTX133312	Rb pAb	ZIKV	WB, ICC/IF
Zika virus NS5 protein antibody	GTX133327	Rb pAb	ZIKV	WB, ICC/IF, IP	
Zika virus NS5 protein antibody	GTX133328	Rb pAb	ZIKV	WB, ICC/IF	
Zika virus NS5 protein antibody	GTX133329	Rb pAb	ZIKV	WB, ICC/IF	
Zika virus NS5 protein antibody [HL2154]	GTX638132	Rec Rb mAb	ZIKV	WB, ICC/IF	
Zika virus NS5 protein antibody [HL4455]	GTX644020	Rec Rb mAb	ZIKV	WB, ICC/IF	
Zika virus NS5 protein antibody [HL5075]	GTX645265	Rec Rb mAb	ZIKV	WB	
Zika virus NS5 protein antibody [HL5195]	GTX645447	Rec Rb mAb	ZIKV	WB	
Zika virus prM protein antibody	GTX133305	Rb pAb	ZIKV	WB, ICC/IF, IP	
Zika virus prM protein antibody	GTX133584	Rb pAb	ZIKV	WB, ICC/IF	

Quality Antibodies . Quality Results