

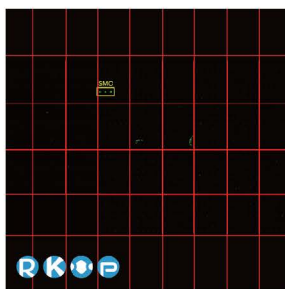


Recombinant Monoclonal Antibodies Against G Protein-Coupled Receptors

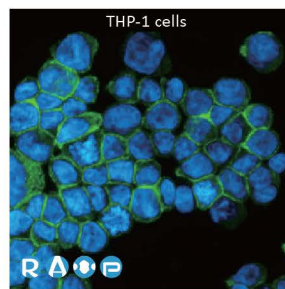
G protein-coupled receptors (GPCRs) represent the largest superfamily of cell surface transmembrane receptors in the human genome and one-third of prescribed drugs modulate GPCR activity. Therefore, developing high-quality GPCR antibodies is crucial for academic, clinical, and pharmaceutical research.

GeneTex is leveraging the advantages of its recombinant monoclonal antibody production system and enhanced “Five Pillar” validation strategies to produce a catalog of best-in-class GPCR antibodies to facilitate research. Meticulous immunogen sequence selection combined with knockout/knockdown testing, comparable antibodies, differential tissue expression, GPCR overexpression, and application-specific testing in immunohistochemistry, immunocytochemistry, and immunoblot are being performed to thoroughly validate these reagents.

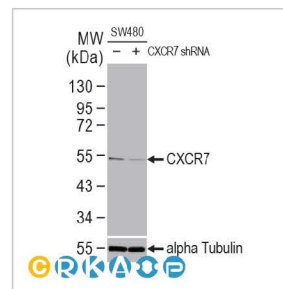
New Recombinant Antibodies for GPCRs



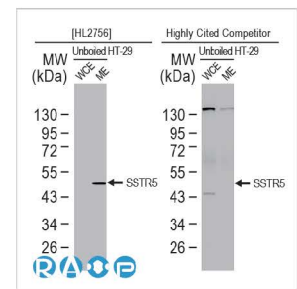
Smoothened homolog antibody [HL2975]
(GTX640362)



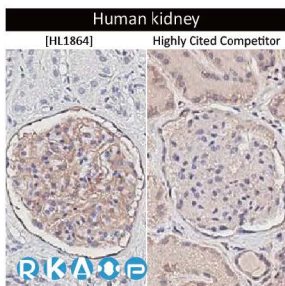
CXCR2 antibody [HL2604]
(GTX639056)



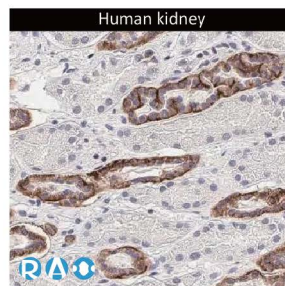
CXCR7 antibody [HL2189]
(GTX638193)



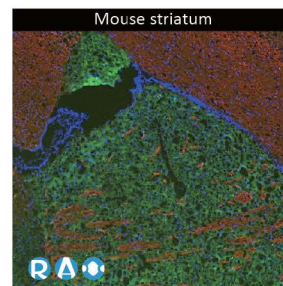
SSTR5 antibody [HL2756]
(GTX639619)



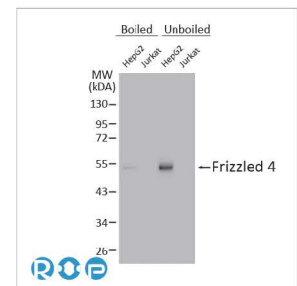
GPRC5A antibody [HL1864]
(GTX637589)



Calcium Sensing Receptor antibody [HL2357]
(GTX638563)

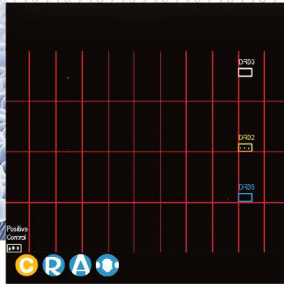


mGluR5 antibody [HL3509]
(GTX641397)

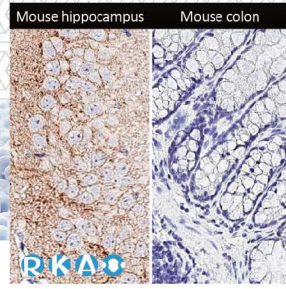


Frizzled 4 antibody [HL2824]
(GTX640095)

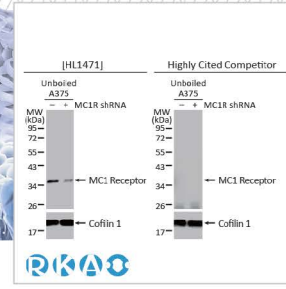
Recombinant Monoclonal Antibodies Against GPCRs



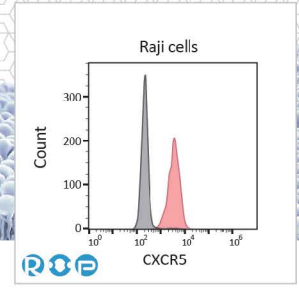
Dopamine Receptor D2 antibody [HL1478]
(GTX636952)



Adenosine A1 Receptor antibody [HL2442]
(GTX638758)

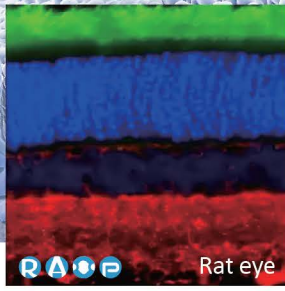


MC1 Receptor antibody [HL1471]
(GTX636945)

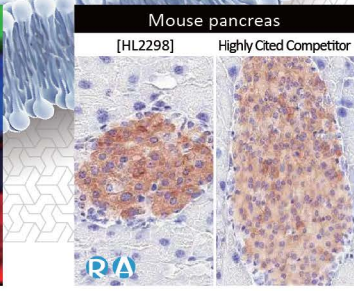


CXCR5 antibody [HL3778]
(GTX641977)

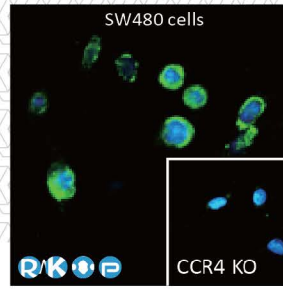
	Subclass	Product Name	Clone	Cat. No.	Clonality	Reactivity	Applications
Class A	5-hydroxytryptamine	5-HT1A Receptor	HL3657	GTX641648	Rec Rb mAb	Hu	WB, FCM
		5-HT1E Receptor	HL3658	GTX641649	Rec Rb mAb	Hu	WB
		5-HT2C Receptor	HL3875	GTX642113	Rec Rb mAb	Hu	WB, IHC-P
		5-HT2A Receptor	HL5352	GTX645830	Rec Rb mAb	Hu, Ms	WB, IHC-P
		5-HT4 Receptor	HL4414	GTX643671	Rec Rb mAb	Hu	IHC-P
		5-HT5A receptor	HL4554	GTX644222	Rec Rb mAb	Hu, Ms, Rat	WB
		5-HT7 Receptor	HL5019	GTX645112	Rec Rb mAb	Hu	WB, IHC-P
Acetylcholine		mAChR M1	HL3933	GTX642178	Rec Rb mAb	Hu, Ms, Rat	WB, IHC-P
		mAChR M3	HL5346	GTX645824	Rec Rb mAb	Ms, Rat	WB
Adenosine		Adenosine A1 Receptor	H341	GTX641402	Rec Rb mAb	Hu	IHC-P
		Adenosine A1 Receptor	HL2442	GTX638758	Rec Rb mAb	Hu, Ms, Rat, Dog	WB, IHC-P
		Adenosine A1 Receptor	HL3987	GTX642313	Rec Rb mAb	Hu	ICC/IF
		Adenosine A2a Receptor	HL4086	GTX642525	Rec Rb mAb	Hu	WB
		Adenosine A2b Receptor	HL3959	GTX642209	Rec Rb mAb	Ms	IHC-Fr
Adrenoceptors		alpha 1a Adrenergic Receptor	HL3291	GTX640945	Rec Rb mAb	Hu, Dog	WB, ICC/IF
		alpha 1a Adrenergic Receptor	HL4266	GTX643502	Rec Rb mAb	Hu	WB
		alpha 1a Adrenergic Receptor	HL4267	GTX643503	Rec Rb mAb	Ms	WB
		alpha 1b Adrenergic Receptor	HL4478	GTX644045	Rec Rb mAb	Hu, Ms, Rat	WB
		alpha 1b Adrenergic Receptor	HL4479	GTX644046	Rec Rb mAb	Hu, Ms, Rat	WB
		alpha 1d Adrenergic Receptor	HL3267	GTX640914	Rec Rb mAb	Hu	ICC/IF
		alpha 2a Adrenergic Receptor	HL3723	GTX641913	Rec Rb mAb	Hu, Ms	WB
		alpha 2a Adrenergic Receptor	HL3725	GTX641915	Rec Rb mAb	Hu, Ms	WB, IHC-P
		alpha 2b Adrenergic Receptor	HL3957	GTX642207	Rec Rb mAb	Hu	WB
		alpha 2b Adrenergic Receptor	HL4510	GTX644080	Rec Rb mAb	Hu	ICC/IF, IHC-P
		beta 1 Adrenergic Receptor	HL3678	GTX641706	Rec Rb mAb	Hu, Cat	WB, FCM
		beta 1 Adrenergic Receptor	HL3929	GTX642174	Rec Rb mAb	Hu, Ms, Rat	WB, FCM
		beta 2 Adrenergic Receptor	HL3594	GTX641565	Rec Rb mAb	Hu	ICC/IF
beta 2 Adrenergic Receptor	HL4320	GTX643567	Rec Rb mAb	Hu	WB		
beta 2 Adrenergic Receptor	HL4346	GTX643596	Rec Rb mAb	Hu	WB		
beta 2 Adrenergic Receptor	HL3099	GTX640545	Rec Rb mAb	Hu	FCM		
beta 3 Adrenergic Receptor	HL4051	GTX642466	Rec Rb mAb	Hu	WB		
beta 3 Adrenergic Receptor	HL5445	GTX646087	Rec Rb mAb	Hu	WB		
Angiotensin		AGTR1	HL2524	GTX638885	Rec Rb mAb	Hu, Ms	WB, ICC/IF, IHC-P
		AGTR1	HL2526	GTX638887	Rec Rb mAb	Hu, Ms	WB, ICC/IF, IHC-P
Apelin		Apelin Receptor	HL2980	GTX640367	Rec Rb mAb	Hu	IHC-P, Functional Assay
		Apelin Receptor	HL4171	GTX642985	Rec Rb mAb	Hu	WB
Bradykinin		BDKRB2	HL5131	GTX645327	Rec Rb mAb	Hu	WB
Cannabinoid		Cannabinoid receptor 1	HL5708	GTX646539	Rec Rb mAb	Hu, Rat	WB
		Cannabinoid receptor 1	HL5924	GTX647249	Rec Rb mAb	Hu, Ms, Rat	WB
		Cannabinoid Receptor 2	HL3120	GTX640596	Rec Rb mAb	Hu	WB, ICC/IF
Chemokine		CCR1	HL2840	GTX640111	Rec Rb mAb	Hu, Cat	WB, ICC/IF, IHC-P
		CCR1	HL3023	GTX640436	Rec Rb mAb	Hu, Ms	ICC/IF, IHC-P
		CCR1	HL3034	GTX640472	Rec Rb mAb	Hu, Cat	WB, ICC/IF, IHC-P
		CCR2	HL2838	GTX640109	Rec Rb mAb	Hu	ICC/IF
		CCR4	HL2481	GTX638830	Rec Rb mAb	Hu, Ms, Rat	ICC/IF, IHC-P, FCM
		CCR4	HL4612	GTX644476	Rec Rb mAb	Hu	WB, ICC/IF
		CCR5	HL2780	GTX639645	Rec Rb mAb	Hu	ICC/IF, FCM
		CCR5	HL3650	GTX641641	Rec Rb mAb	Hu, Rat	WB, ICC/IF
		CCR7	HL3074	GTX640520	Rec Rb mAb	Hu	ICC/IF, IHC-P
		CCR7	HL3075	GTX640521	Rec Rb mAb	Hu, Rat	IHC-P
		CCR9	HL3054	GTX640497	Rec Rb mAb	Hu	WB, ICC/IF, IHC-P, FCM



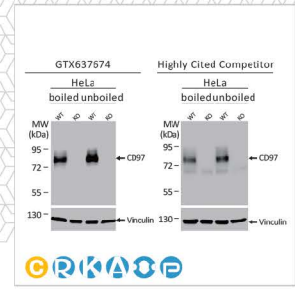
Rhodopsin antibody [HL2668]
(GTX639332)



GLP1R antibody [HL2298]
(GTX638353)

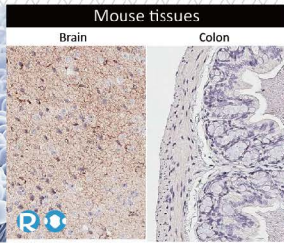


CCR4 antibody [HL2481]
(GTX638830)

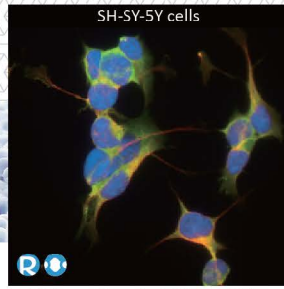


CD97 antibody [HL1925]
(GTX637674)

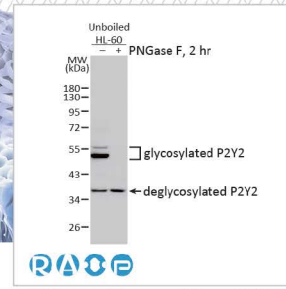
Subclass	Product Name	Clone	Cat. No.	Clonality	Reactivity	Applications	
Class A	CCR9	HL4846	GTX644909	Rec Rb mAb	Hu	FCM	
	CCR10	HL2852	GTX640123	Rec Rb mAb	Hu	ICC/IF, Functional Assay	
		HL2853	GTX640124	Rec Rb mAb	Hu	ICC/IF, Functional Assay	
	CCR11	HL3208	GTX640848	Rec Rb mAb	Ms	IHC-P	
	CCRL2	HL4222	GTX643044	Rec Rb mAb	Hu	WB	
	CXCR1	HL2674	GTX639338	Rec Rb mAb	Hu, Ms, Rat	IHC-P	
	CXCR2	HL2604	GTX639056	Rec Rb mAb	Hu	WB, ICC/IF, IHC-P, FCM, Functional Assay	
	Chemokine	CXCR4	HL2612	GTX639064	Rec Rb mAb	Hu, Ms, Dog	WB, ICC/IF, FCM
			HL2734	GTX639562	Rec Rb mAb	Hu	ICC/IF
		CXCR5	HL3568	GTX641474	Rec Rb mAb	Hu	WB
			HL3569	GTX641475	Rec Rb mAb	Hu, Ms	WB, IHC-P
		CXCR6	HL3708	GTX641880	Rec Rb mAb	Hu, Ms, Rat	WB, IHC-P, IHC-Fr
			HL3778	GTX641977	Rec Rb mAb	Hu	ICC/IF, FCM
		CXCR7	HL3777	GTX641976	Rec Rb mAb	Hu	ICC/IF
			HL2849	GTX640120	Rec Rb mAb	Hu	WB, ICC/IF
HL3144			GTX640636	Rec Rb mAb	Hu	IHC-P	
Chemokine Receptor D6		HL3763	GTX641962	Rec Rb mAb	Hu	ICC/IF	
	HL3762	GTX641961	Rec Rb mAb	Hu	WB		
	HL4701	GTX644702	Rec Rb mAb	Hu	ICC/IF, FCM		
	HL5104	GTX645298	Rec Rb mAb	Hu	WB		
Cholecystokinin	HL5734	GTX646685	Rec Rb mAb	Hu	WB		
	CCKBR	HL4404	GTX643661	Rec Rb mAb	Hu	WB	
	GPR3	HL4862	GTX644925	Rec Rb mAb	Hu, Ms	WB	
		HL4705	GTX644706	Rec Rb mAb	Hu	WB	
	GPR15	HL4704	GTX644705	Rec Rb mAb	Hu	WB	
		HL4426	GTX643715	Rec Rb mAb	Hu	WB	
	GPR21	HL4712	GTX644713	Rec Rb mAb	Hu, Ms, Rat	WB, ICC/IF	
	GPR31	HL4702	GTX644703	Rec Rb mAb	Hu	WB	
	GPR37	HL4948	GTX645021	Rec Rb mAb	Hu	WB	
	GPR37L1	HL4988	GTX645074	Rec Rb mAb	Hu	WB	
	GPR45	HL4430	GTX643719	Rec Rb mAb	Hu	WB	
	GPR50	HL4628	GTX644492	Rec Rb mAb	Hu	WB, ICC/IF	
	GPR52	HL5461	GTX646103	Rec Rb mAb	Hu	WB	
	GPR62	HL5046	GTX645216	Rec Rb mAb	Hu	WB	
	Class A Orphans	GPR68	HL4864	GTX644927	Rec Rb mAb	Hu	WB
GPR83		HL4707	GTX644708	Rec Rb mAb	Ms	IHC-P	
		HL4768	GTX644772	Rec Rb mAb	Hu	WB	
GPR84		HL4667	GTX644540	Rec Rb mAb	Hu	WB	
GPR88		HL4673	GTX644546	Rec Rb mAb	Hu	WB	
GPR107		HL4815	GTX644827	Rec Rb mAb	Hu, Ms, Rat	WB	
GPR126		HL4744	GTX644748	Rec Rb mAb	Hu	WB	
GPR132		HL4946	GTX645019	Rec Rb mAb	Hu	WB	
GPR135		HL4668	GTX644541	Rec Rb mAb	Hu	WB	
GPR137		HL4813	GTX644825	Rec Rb mAb	Hu	WB	
GPR139		HL4268	GTX643504	Rec Rb mAb	Hu	ICC/IF	
GPR146		HL4489	GTX644056	Rec Rb mAb	Hu	WB	
GPR148		HL4630	GTX644494	Rec Rb mAb	Hu	WB, ICC/IF	
GPR150		HL4986	GTX645072	Rec Rb mAb	Hu	WB	
GPR151		HL4860	GTX644923	Rec Rb mAb	Hu	WB	



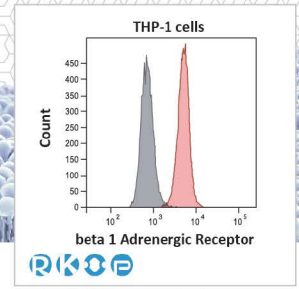
GPR83 antibody [HL4707]
(GTX644708)



BAI3 antibody [HL4095]
(GTX642534)

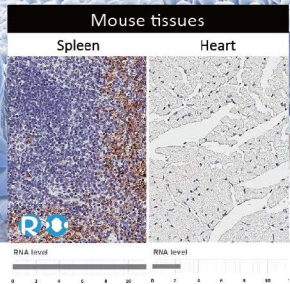


P2Y2 antibody [HL2704]
(GTX639458)

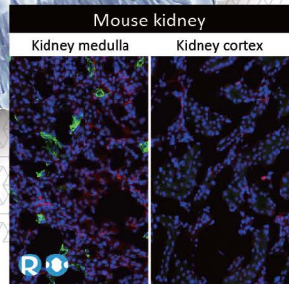


beta 1 Adrenergic Receptor antibody [HL3678] (GTX641706)

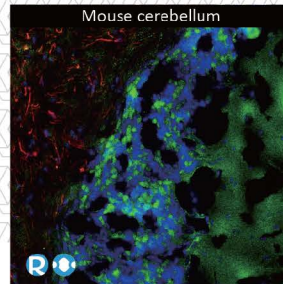
	Subclass	Product Name	Clone	Cat. No.	Clonality	Reactivity	Applications	
Class A		GPR151	HL5261	GTX645517	Rec Rb mAb	Hu	WB	
				GT279	GTX644891	Rec Ms mAb	Hu	WB
		GPR152	HL4936	GTX645009	Rec Rb mAb	Hu, Ms	WB	
			HL5168	GTX645364	Rec Rb mAb	Hu	WB	
		GPR153	HL4829	GTX644841	Rec Rb mAb	Hu	WB	
		GPR157	HL5110	GTX645304	Rec Rb mAb	Hu	WB	
		GPR175	HL4903	GTX644968	Rec Rb mAb	Hu	WB	
		GPR176	HL4247	GTX643080	Rec Rb mAb	Hu	WB	
GPR182	HL5311	GTX645776	Rec Rb mAb	Hu	WB			
Class A Orphans		LGR5	HL4443	GTX644008	Rec Rb mAb	Hu	WB	
		LGR6	HL2827	GTX640098	Rec Rb mAb	Hu	WB, IHC-P	
		MRGE	HL5041	GTX645211	Rec Rb mAb	Hu	WB, ICC/IF	
		MRGPRF	HL4466	GTX644031	Rec Rb mAb	Hu, Ms, Rat	WB, IHC-P	
			HL4802	GTX644814	Rec Rb mAb	Hu, Dog	WB	
		MRGPRG	HL4742	GTX644746	Rec Rb mAb	Hu	WB	
			HL4853	GTX644916	Rec Rb mAb	Hu	WB	
		MRGPRX4	HL4421	GTX643710	Rec Rb mAb	Hu	WB	
		MRGX1	HL4402	GTX643659	Rec Rb mAb	Hu	WB, ICC/IF	
			HL4467	GTX644032	Rec Rb mAb	Hu	WB	
Complement		C3a Receptor	HL2744	GTX639573	Rec Rb mAb	Hu	WB, ICC/IF, FCM	
			HL2831	GTX640102	Rec Rb mAb	Hu	WB, ICC/IF, IHC-P, FCM	
		C5L2	HL2855	GTX640126	Rec Rb mAb	Hu	ICC/IF, IHC-P	
			HL4135	GTX642940	Rec Rb mAb	Hu	WB, ICC/IF	
			HL4182	GTX642996	Rec Rb mAb	Hu	WB	
Dopamine		Dopamine Receptor D1	HL2680	GTX639344	Rec Rb mAb	Hu	WB	
			HL2927	GTX640270	Rec Rb mAb	Hu	ICC/IF, IHC-P, FCM	
		Dopamine Receptor D2	HL2553	GTX638925	Rec Rb mAb	Hu, Ms	WB, FCM	
			HL1478	GTX636952	Rec Rb mAb	Hu, Ms, Rat	WB, ICC/IF, FCM, Functional Assay	
			HL4284	GTX643524	Rec Rb mAb	Hu	FCM	
		Dopamine Receptor D4	HL1584	GTX637063	Rec Rb mAb	Hu, Ms, Rat	WB, ICC/IF, FCM	
			HL3159	GTX640669	Rec Rb mAb	Hu, Ms, Rat	IHC-P, IHC-Fr, FCM	
			HL2850	GTX640121	Rec Rb mAb	Hu	IHC-P, FCM	
Dopamine Receptor D5	HL2851	GTX640122	Rec Rb mAb	Hu	WB, ICC/IF, IHC-P			
	HL3081	GTX640527	Rec Rb mAb	Hu, Ms	ICC/IF, IHC-P			
Endothelin		Endothelin B Receptor	HL3100	GTX640546	Rec Rb mAb	Hu	IHC-P	
			HL2832	GTX640103	Rec Rb mAb	Hu, Ms, Rat	IHC-P	
Estrogen		GPR30	HL4305	GTX643552	Rec Rb mAb	Hu, Ms	ICC/IF, IHC-P	
			HL3783	GTX642002	Rec Rb mAb	Hu	WB, ICC/IF	
Formylpeptide		FPR1	HL4262	GTX643498	Rec Rb mAb	Hu	ICC/IF, IHC-P	
			HL2664	GTX639328	Rec Rb mAb	Hu, Ms	WB, ICC/IF, IHC-P	
		FPRL1	HL4589	GTX644265	Rec Rb mAb	Hu	ICC/IF	
			HL4245	GTX643078	Rec Rb mAb	Hu	ICC/IF	
Free fatty acid		GPR40	HL3956	GTX642206	Rec Rb mAb	Ms	IHC-P, IHC-Fr	
			GPR43	HL3073	GTX640519	Rec Rb mAb	Hu	IHC-P
			GPR120	HL3563	GTX641469	Rec Rb mAb	Hu, Ms	ICC/IF, IHC-Fr
Galanin	GALR1	HL4711	GTX644712	Rec Rb mAb	Hu	ICC/IF		
Ghrelin		GHS-R1	HL4566	GTX644234	Rec Rb mAb	Hu, Ms	WB, IHC-P	
			HL2784	GTX639652	Rec Rb mAb	Hu, Ms	WB, ICC/IF	
			HL2926	GTX640269	Rec Rb mAb	Hu, Ms	ICC/IF, IHC-P	
			HL3233	GTX640874	Rec Rb mAb	Hu	WB, FCM	
Glycoprotein		FSH Receptor	HL5339	GTX645817	Rec Rb mAb	Hu	WB	



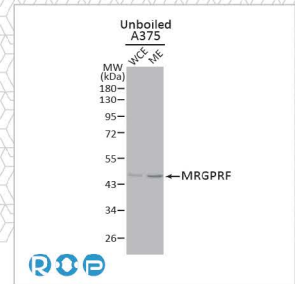
F4/80 antibody [HL4142]
(GTX642947)



SCTR antibody [HL5265]
(GTX645521)

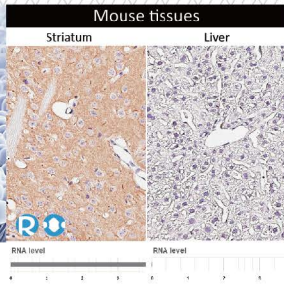


GPRC5C antibody [HL3595]
(GTX641566)

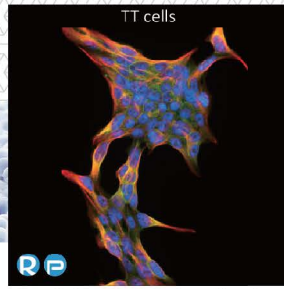


MRGPRF antibody [HL4802]
(GTX644814)

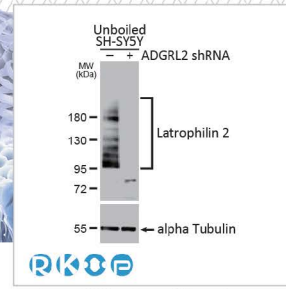
	Subclass	Product Name	Clone	Cat. No.	Clonality	Reactivity	Applications
Class A	Glycoprotein	TSH Receptor	HL3874	GTX642112	Rec Rb mAb	Hu	WB, FCM
	Gonadotrophin	GnRHR	HL2638	GTX639094	Rec Rb mAb	Hu	WB
	Histamine	HRH1	HL2783	GTX639651	Rec Rb mAb	Hu	IHC-P
			HL3037	GTX640475	Rec Rb mAb	Hu	WB, ICC/IF
			HL3357	GTX641134	Rec Rb mAb	Hu	FCM
	Hydroxycarboxylic acid	GPR81	HL4128	GTX642574	Rec Rb mAb	Hu	WB
	Kisspeptin	GPR54	HL4049	GTX642464	Rec Rb mAb	Hu	IHC-P
	Leukotriene	Leukotriene B4 Receptor 2	HL4803	GTX644815	Rec Rb mAb	Hu	WB
			OXER1	HL4831	GTX644843	Rec Rb mAb	Hu
	Lysophospholipid	EDG4 / LPAR2	HL3661	GTX641652	Rec Rb mAb	Hu	ICC/IF
		PAF Receptor	HL2998	GTX640408	Rec Rb mAb	Hu, Dog	WB
		S1PR2	HL3765	GTX641964	Rec Rb mAb	Hu, Ms, Rat	WB, FCM
			HL3921	GTX642166	Rec Rb mAb	Hu	IHC-P
		S1PR4	HL5307	GTX645772	Rec Rb mAb	Hu, Ms	WB
		S1PR5 / EDG8	HL4092	GTX642531	Rec Rb mAb	Ms	WB
			HL4439	GTX643728	Rec Rb mAb	Hu	WB, ICC/IF
			HL4442	GTX643731	Rec Rb mAb	Hu	WB
		HL4441	GTX643730	Rec Rb mAb	Hu	WB, IHC-P	
		Melanin-concentrating hormone	MCH-1R	HL5082	GTX645272	Rec Rb mAb	Ms
	Melanocortin	MC1 Receptor	HL1470	GTX636944	Rec Rb mAb	Hu, Ms, Rat	WB, ICC/IF
			HL1471	GTX636945	Rec Rb mAb	Hu, Ms, Rat	WB, ICC/IF, IHC-P, IHC-Fr
		MC4 Receptor	HL3145	GTX640637	Rec Rb mAb	Hu, Ms	IHC-P, FCM
		MC5 Receptor	HL3178	GTX640696	Rec Rb mAb	Hu, Ms	WB
	Melatonin	Melatonin Receptor 1A	HL4732	GTX644736	Rec Rb mAb	Hu, Ms, Rat	WB
	Motilin	Motilin Receptor	HL4434	GTX643723	Rec Rb mAb	Hu	ICC/IF
	Neuromedin U	NMUR2	HL4522	GTX644092	Rec Rb mAb	Hu	WB
	Neuropeptide W/ B	GPR7	HL4939	GTX645012	Rec Rb mAb	Hu	WB
			HL5047	GTX645217	Rec Rb mAb	Hu	WB
		GPR8	HL4994	GTX645080	Rec Rb mAb	Hu	WB
	Neurotensin	NTSR2	HL5590	GTX646272	Rec Rb mAb	Hu	WB, IHC-P
	Olfactory receptor	OR2W3	HL5555	GTX646229	Rec Rb mAb	Hu	WB
	Opioid	delta Opioid Receptor	HL2724	GTX639551	Rec Rb mAb	Hu	WB, IHC-P
		Mu Opioid Receptor	HL3348	GTX641120	Rec Rb mAb	Hu, Ms	WB, FCM
	Opsins	Opsin 5	HL5048	GTX645218	Rec Rb mAb	Ms, Rat	WB
		Opsin Blue	HL4351	GTX643601	Rec Rb mAb	Hu	IHC-P
		Opsin Red / Green	HL3435	GTX641277	Rec Rb mAb	Hu, Ms, Rat	WB, ICC/IF, IHC-P, IHC-Fr
			HL3484	GTX641369	Rec Rb mAb	Hu, Ms, Rat	IHC-P
		HMV4716	GTX644717	Rec Rb mAb	Hu	IHC-P	
		RGR	HL3056 + HL3058	GTX641102	Rec Rb multi Ab	Ms, Rat	IHC-P
		HL3058	GTX640501	Rec Rb mAb	Hu, Ms, Rat	IHC-P	
		Rhodopsin	HL2668	GTX639332	Rec Rb mAb	Hu, Ms, Rat	WB, IHC-P, FCM
	Orexin	Orexin Receptor 2	HL5083	GTX645273	Rec Rb mAb	Hu	ICC/IF
	Prolactin	GPR10	HL5202	GTX645454	Rec Rb mAb	Hu	WB
	Prostanoid	PTGER3	HL3653	GTX641644	Rec Rb mAb	Hu	IHC-P, FCM
		TXA2R	HL4757	GTX644761	Rec Rb mAb	Hu	WB
			HL4934	GTX645007	Rec Rb mAb	Hu	WB
		HL4935	GTX645008	Rec Rb mAb	Hu	WB	
	Proteinase-activated receptor	PAR2	HL3771	GTX641970	Rec Rb mAb	Hu	WB, ICC/IF, FCM
		PAR3	HL3828	GTX642052	Rec Rb mAb	Hu	ICC/IF
	Relaxin family	LGR7	HL4103	GTX642549	Rec Rb mAb	Hu	ICC/IF
RXFP3		HL4856	GTX644919	Rec Rb mAb	Hu	ICC/IF	
P2Y	P2Y1	HL2702	GTX639453	Rec Rb mAb	Hu	WB, IHC-P	



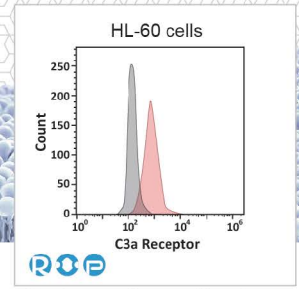
MCH-1R antibody
[HL5082] (GTX645272)



Orexin Receptor 2 antibody
[HL5083] (GTX645273)

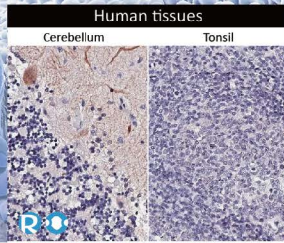


Latrophilin 2 antibody
[HL4090] (GTX642529)

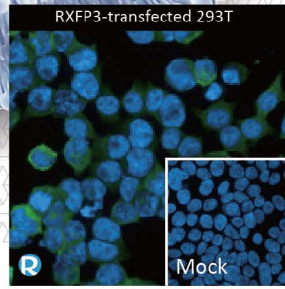


C3a Receptor antibody
[HL2831] (GTX640102)

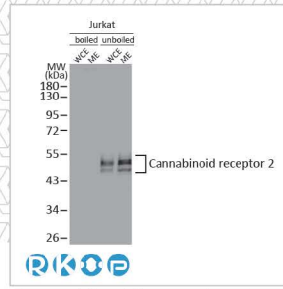
	Subclass	Product Name	Clone	Cat. No.	Clonality	Reactivity	Applications	
Class A	P2Y	P2Y2	HL2704	GTX639458	Rec Rb mAb	Hu	WB, ICC/IF	
			HL2801	GTX639689	Rec Rb mAb	Hu, Ms, Rat	ICC/IF, IHC-P	
			HL3923	GTX642168	Rec Rb mAb	Hu	FCM	
			HL3922	GTX642167	Rec Rb mAb	Hu	ICC/IF	
		P2Y4	HL5284	GTX645722	Rec Rb mAb	Hu	WB	
		HL2821	GTX640092	Rec Rb mAb	Hu	ICC/IF, IHC-P		
		P2Y11	HL4400	GTX643657	Rec Rb mAb	Hu	WB, ICC/IF	
		HL4748	GTX644752	Rec Rb mAb	Hu	WB		
		P2Y12	HL2829	GTX640100	Rec Rb mAb	Hu	ICC/IF	
		P2Y13	HL3775	GTX641974	Rec Rb mAb	Hu	FCM	
	Somatostatin	Somatostatin Receptor 2	HL3078	GTX640524	Rec Rb mAb	Hu	ICC/IF, IHC-P	
		Somatostatin Receptor 3	H340	GTX641401	Rec Rb mAb	Hu	IHC-P	
			HL2681	GTX639345	Rec Rb mAb	Hu, Ms	WB, IHC-P	
		Somatostatin Receptor 4	HL2933	GTX640276	Rec Rb mAb	Hu	WB, IHC-P	
		Somatostatin Receptor 5	HL2756	GTX639619	Rec Rb mAb	Hu	WB	
	Tachykinin	Neurokinin 1 Receptor	HL3194	GTX640833	Rec Rb mAb	Hu	ICC/IF	
			HL3195	GTX640834	Rec Rb mAb	Hu, Ms, Rat, Dog	WB	
		Neurokinin 2 Receptor	HL4859	GTX644922	Rec Rb mAb	Hu	WB	
		Neurokinin 3 Receptor	HL4983	GTX645069	Rec Rb mAb	Hu	WB	
	HL4985		GTX645071	Rec Rb mAb	Hu, Ms	WB		
Urotensin	GPR14	HL5242	GTX645498	Rec Rb mAb	Hu	WB		
		HL5695	GTX646526	Rec Rb mAb	Hu	WB		
Vasopressin	AVPR1A	HL5826	GTX647144	Rec Rb mAb	Ms	WB		
	AVPR1B	HL4945	GTX645018	Rec Rb mAb	Hu	WB		
		HL5060	GTX645230	Rec Rb mAb	Hu	WB, IHC-P		
Class B1	Calcitonin	CRLR	HL3876	GTX642114	Rec Rb mAb	Hu	WB	
			HL2297	GTX638352	Rec Rb mAb	Hu, Ms, Rat	IHC-P	
	Glucagon family	GLP1R	HL2298	GTX638353	Rec Rb mAb	Ms	IHC-P	
			SCTR	HL5265	GTX645521	Rec Rb mAb	Hu, Ms	IHC-P, IHC-Fr
Parathyroid	PTH1R	HL3651	GTX641642	Rec Rb mAb	Hu, Ms	WB, IHC-Fr, FCM		
VIP and PACAP	VPAC2	HL3625	GTX641600	Rec Rb mAb	Hu, Ms, Rat	WB, IHC-P, IHC-Fr		
Class B2	Adhesion	CD97	HL4184	GTX642998	Rec Rb mAb	Hu, Ms, Rat	WB	
			HL4188	GTX643002	Rec Rb mAb	Hu, Ms, Rat	WB	
			BAI1	HL4190	GTX643004	Rec Rb mAb	Hu, Ms, Rat	WB, IHC-P
			HL4186	GTX643000	Rec Rb mAb	Hu	WB	
			HL4187	GTX643001	Rec Rb mAb	Hu	WB, ICC/IF	
			BAI2	HL4093	GTX642532	Rec Rb mAb	Hu, Ms, Rat	WB
			BAI3	HL4095	GTX642534	Rec Rb mAb	Hu, Ms, Rat	WB, ICC/IF
			HL1924	GTX637673	Rec Rb mAb	Hu, Dog	WB, ICC/IF	
			HL1925	GTX637674	Rec Rb mAb	Hu	WB, IP	
			HL4246	GTX643079	Rec Rb mAb	Hu	WB	
	Adhesion	CELSR1	HL4515	GTX644085	Rec Rb mAb	Hu	WB	
			HL4484	GTX644051	Rec Rb mAb	Hu, Ms	WB	
		CELSR2	HL4485	GTX644052	Rec Rb mAb	Hu	ICC/IF	
			HL5390	GTX645958	Rec Rb mAb	Hu	WB	
			HL4191	GTX643005	Rec Rb mAb	Hu	WB	
		EMR2	HL4418	GTX643707	Rec Rb mAb	Hu	WB	
			HL4420	GTX643709	Rec Rb mAb	Hu	WB, ICC/IF	
		ETL	HL5037	GTX645207	Rec Rb mAb	Hu	WB	
		F4/80	HL4142	GTX642947	Rec Rb mAb	Hu, Ms	ICC/IF, IHC-P	
			HL4143	GTX642948	Rec Rb mAb	Hu, Ms	WB	
HL4272	GTX643508		Rec Rb mAb	Hu	WB			



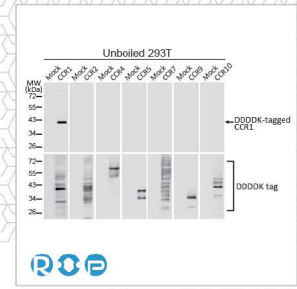
5-HT5A receptor antibody [HL5019] (GTX645112)



RXFP3 antibody [HL4856] (GTX644919)



Cannabinoid receptor 2 antibody [HL3120] (GTX640596)

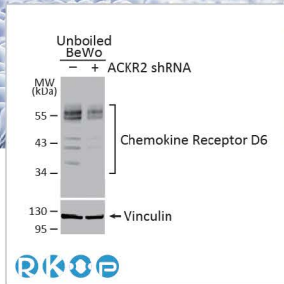


CCR1 antibody [HL3023] (GTX640436)

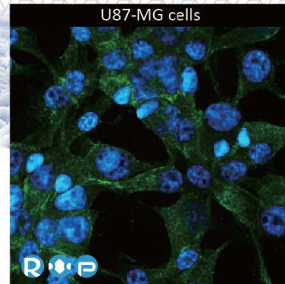
Subclass	Product Name	Clone	Cat. No.	Clonality	Reactivity	Applications		
Class B2		HL5469	GTX646111	Rec Rb mAb	Hu, Ms	WB		
		F4/80	HL5468	GTX646110	Rec Rb mAb	Hu, Ms	WB, IHC-P	
			HL4141	GTX642946	Rec Rb mAb	Hu, Ms	WB, ICC/IF	
		GPR97	HL4088	GTX642527	Rec Rb mAb	Hu	WB	
		GPR110	HL5109	GTX645303	Rec Rb mAb	Hu	WB	
		GPR114	HL3850	GTX642084	Rec Rb mAb	Hu	WB, ICC/IF	
		GPR116	HL4482	GTX644049	Rec Rb mAb	Hu	WB	
		GPR123	HL4122	GTX642568	Rec Rb mAb	Hu	WB	
	Adhesion		GPR125	HL4659	GTX644532	Rec Rb mAb	Hu	WB
			GPR126	HL4480	GTX644047	Rec Rb mAb	Hu	IHC-P
			GPR128	HL4855	GTX644918	Rec Rb mAb	Hu	WB
			GPR133	HL4528	GTX644098	Rec Rb mAb	Hu	WB
				HL4530	GTX644100	Rec Rb mAb	Hu	WB
			GPR144	HL4902	GTX644967	Rec Rb mAb	Hu	WB
		Latrophilin 1	HL3853	GTX642087	Rec Rb mAb	Hu	WB	
		Latrophilin 2	HL4090	GTX642529	Rec Rb mAb	Hu, Ms	WB, IHC-P, IHC-Fr	
			HL4270	GTX643506	Rec Rb mAb	Hu	WB	
		Latrophilin 3	HL5478	GTX646120	Rec Rb mAb	Hu, Ms	WB	
Class C	Calcium-sensing	Calcium Sensing Receptor	HL2357	GTX638563	Rec Rb mAb	Hu, Ms, Rat, Cat	WB, IHC-P, IP	
			GPR156	HL5234	GTX645490	Rec Rb mAb	Hu	WB
			HL5372	GTX645850	Rec Rb mAb	Hu	WB	
			GPR158	HL5447	GTX646089	Rec Rb mAb	Hu	WB
	Class C Orphans		HL1864	GTX637589	Rec Rb mAb	Hu	WB, ICC/IF, IHC-P	
			GPRC5A	HL3393	GTX641213	Rec Rb mAb	Hu	WB
			HMV4717	GTX645997	Rec Rb mAb	Hu	IHC-P	
			GPRC5B	HL5794	GTX646865	Rec Rb mAb	Hu	WB, IHC-P
			HL3595	GTX641566	Rec Rb mAb	Hu, Ms	IHC-P, IHC-Fr	
			GPRC5C	HL4114	GTX642560	Rec Rb mAb	Hu, Ms	WB
			HL5446	GTX646088	Rec Rb mAb	Hu, Ms	WB	
	GABA		GABA B Receptor 1	GT83	GTX641938	Rec Ms mAb	Ms, Rat	WB, IHC-P
		GABA B Receptor 2	HL4551	GTX644219	Rec Rb mAb	Hu, Ms, Rat	WB, IHC-P, IHC-Fr	
			HL4937	GTX645010	Rec Rb mAb	Hu, Ms, Rat	WB, IHC-P	
Metabotropic glutamate		mGluR1	HL4127	GTX642573	Rec Rb mAb	Hu, Ms, Rat	WB, IHC-P	
	HL5718		GTX646549	Rec Rb mAb	Hu, Ms, Rat	WB		
	mGluR4	HL3986	GTX642312	Rec Rb mAb	Hu, Ms, Rat	WB		
		HL4697	GTX644698	Rec Rb mAb	Hu, Ms, Rat	WB, IHC-P, IHC-Fr		
		H339	GTX641400	Rec Rb mAb	Hu	IHC-P		
	mGluR5	HL2543	GTX638912	Rec Rb mAb	Hu, Ms, Rat	WB, IHC-P		
		HL2876	GTX640153	Rec Rb mAb	Hu, Ms, Rat	WB, ICC/IF		
HL3433		GTX641275	Rec Rb mAb	Hu, Ms, Rat	WB, ICC/IF			
	HL3509	GTX641397	Rec Rb mAb	Hu, Ms, Rat	WB, IHC-P, IHC-Fr, FCM			
mGluR6	HL4469	GTX644034	Rec Rb mAb	Hu	WB, IHC-P			
	HL4518	GTX644088	Rec Rb mAb	Hu	WB			
	HL4516	GTX644086	Rec Rb mAb	Hu, Ms, Rat	IHC-P			
mGluR7	HL5417	GTX645985	Rec Rb mAb	Hu, Ms	WB			
Class F	Frizzled	Frizzled 1	HL4699	GTX644700	Rec Rb mAb	Hu	WB	
		Frizzled 2	HL5743	GTX646694	Rec Rb mAb	Hu	WB	
		Frizzled 4	HL2824	GTX640095	Rec Rb mAb	Hu, Zfsh	WB	
		Frizzled 6	HL4857	GTX644920	Rec Rb mAb	Hu	WB	
		Frizzled 8	HL4405	GTX643662	Rec Rb mAb	Ms	WB	
		Frizzled 9	HL1675	GTX637274	Rec Rb mAb	Hu	WB	

Recombinant Monoclonal Antibodies Against GPCRs

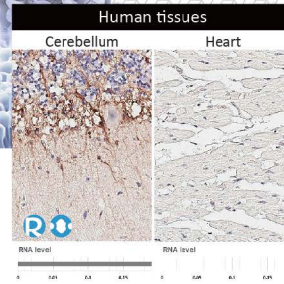
R Recombinant
 K KO/KD Validation
 O Orthogonal Validation
 P Protein Overexpression



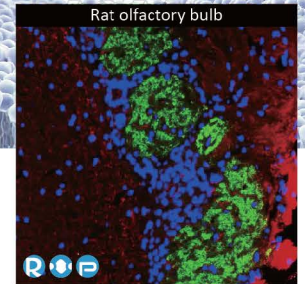
Chemokine Receptor D6 antibody [HL5104] (GTX645298)



FPR1 antibody [HL4262] (GTX643498)



GPR54 antibody [HL4049] (GTX642464)



GABA B Receptor 2 antibody [HL4551] (GTX644219)

	Subclass	Product Name	Clone	Cat. No.	Clonality	Reactivity	Applications
Class F	Frizzled	Smoothed homolog	HL2975	GTX640362	Rec Rb mAb	Hu, Ms	WB, FCM, Functional Assay
			HL2976	GTX640363	Rec Rb mAb	Hu	WB
			HL3055	GTX640498	Rec Rb mAb	Hu	IHC-P
Taste 2	TAS1R2	TAS1R2	HL4180	GTX642994	Rec Rb mAb	Hu	WB, ICC/IF
			HL4747	GTX644751	Rec Rb mAb	Hu	ICC/IF
			HL5308	GTX645773	Rec Rb mAb	Hu	WB
Taste 2	TAS2R3	TAS2R3	HL5015	GTX645108	Rec Rb mAb	Hu	WB
			HL5235	GTX645491	Rec Rb mAb	Hu	WB
			HL4808	GTX644820	Rec Rb mAb	Hu	WB, ICC/IF
			HL4024	GTX642355	Rec Rb mAb	Hu, Dog	WB
			HL4905	GTX644970	Rec Rb mAb	Hu	WB, ICC/IF
			HL4906	GTX644971	Rec Rb mAb	Hu	WB, ICC/IF